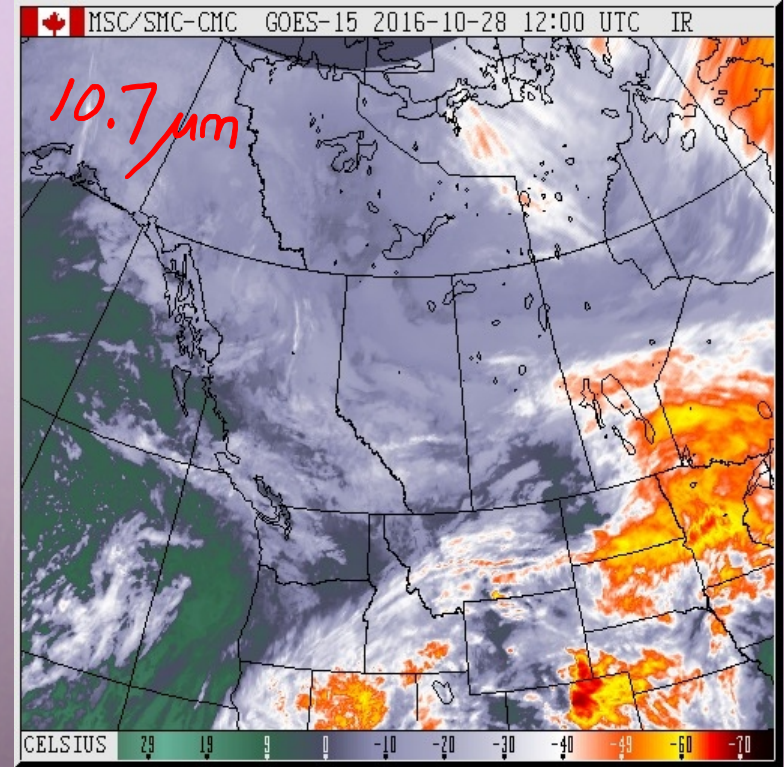


ENV. CDA. 7 CDT FRI. OCT. 28 2016.

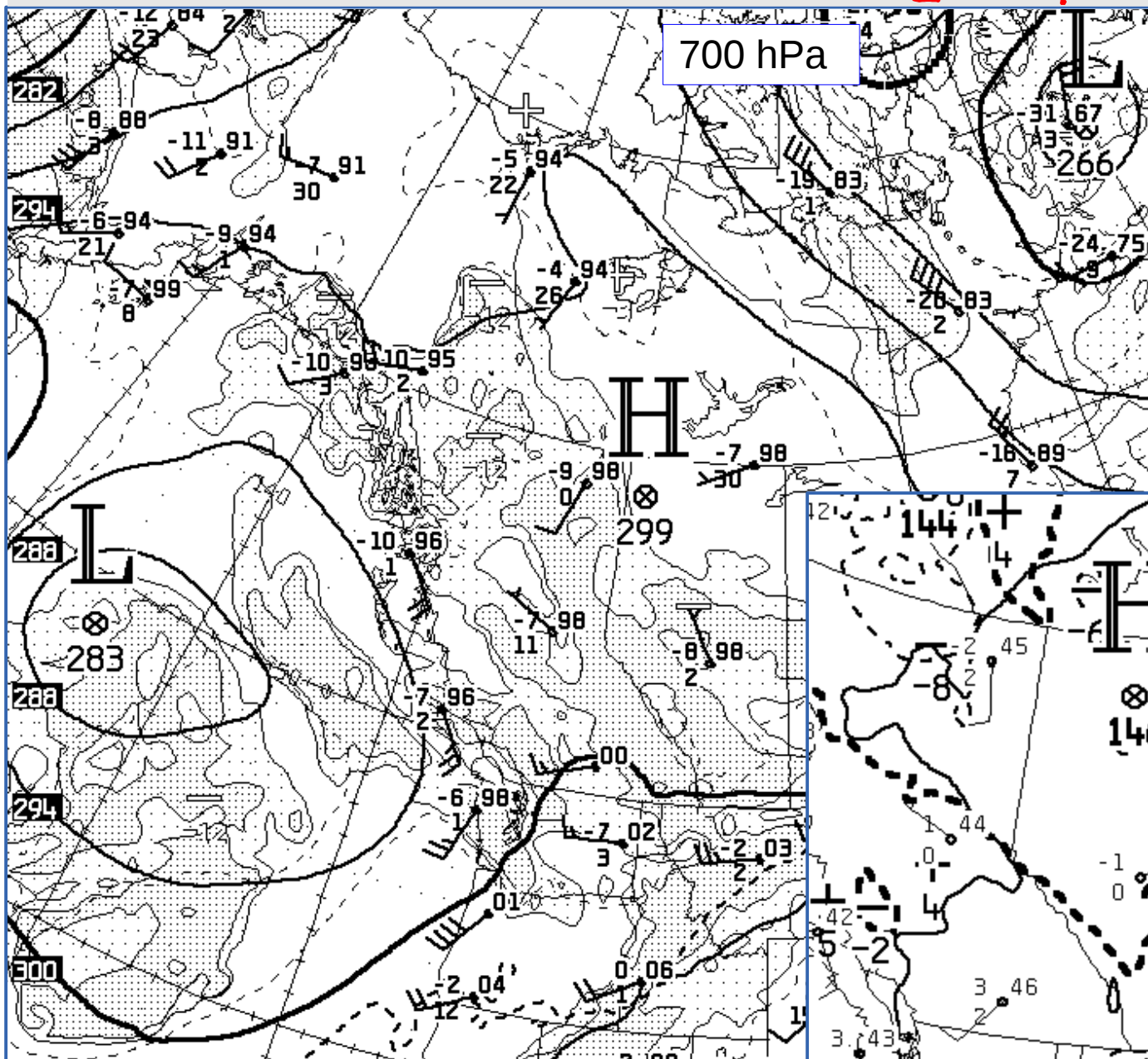
FOG ADVISORY FOR MUCH OF CENTRAL ALBERTA.

WESTERN PRAIRIES...ANOTHER DREARY DAY IS IN STORE FOR ALBERTA WITH AN EXTENSIVE BLANKET OF LOW CLOUD COVERING MOST OF THE PROVINCE. EXTENSIVE AREA OF FOG/MIST THROUGH CENTRAL AND SOME PORTIONS OF SOUTHERN ALBERTA WILL PERSIST UNTIL LATER THIS MORNING... WITH LITTLE FLOW AND NO APPRECIABLE CHANGE IN THE WEATHER PATTERN EXPECT TO SEE LOW CLOUD TO PERSIST IN MOST AREAS AND FOG/MIST TO REDEVELOP AGAIN THIS EVENING.

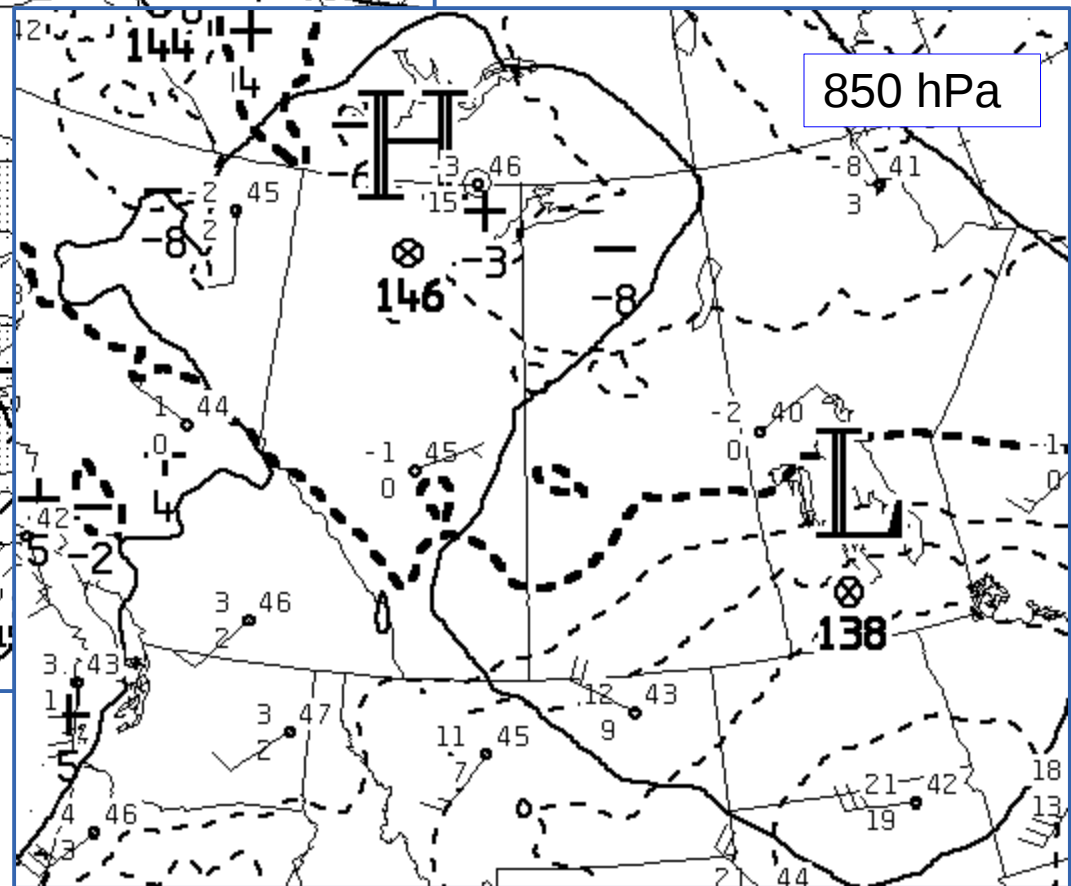


# Weather situation 12Z Friday 28 Oct. 2016

## 12Z CMC analyses



- weak winds – situation tends to persist
- low  $T - T_d$  aloft



- weak upslope flow at 850 hPa (helps keep  $T$  close to  $T_d$ )



# Weather situation 12Z Friday 28 Oct. 2016

161028/1200 71119 WSE SHOW: 8 LIFT: 10 SHET: 81 SELV: 22

- "wse" is Stony Plain
- saturated (or nearly) and unconditionally stable from surface to about 800 hPa (i.e. apprx. the lowest 1 km)
- weak winds, little mixing
- tropopause level 300 hPa

