

SNOWFALL WARNING IN EFFECT

Current Conditions



-14°C

°C | °F

SIGNIFICANT WEATHER DISCUSSION... PRAIRIE AND ARCTIC STORM PREDICTION CENTRE... 7:00 AM CST THURSDAY FEBRUARY 5 2015.

... SNOWFALL WARNINGS CENTRAL ALBERTA. FREEZING RAIN WARNING FOR SE ALBERTA AND SW SASKATCHEWAN...

WARM PUSH OF AIR OFF THE PACIFIC ACROSS ALBERTA AND SWRN SASKATCHEWAN PUSHING EAST INCREASING BAROCLINICITY...

WESTERN PRAIRIES... GREATER AMOUNTS OF SNOW ARE EXPECTED FARTHER WEST ALONG THE BAROCLINIC ZONE WITH ACCUMULATIONS OF 10 TO 20 CM FORECAST BY END OF FRIDAY THROUGH PARTS OF CENTRAL ALBERTA.

CONCERN IS NOT THE INTENSITY OF THE SNOW BUT THE PROLONGED NATURE OF IT AS THE SYNOPTIC PATTERN DOESN'T SHIFT UNTIL THE WEEKEND.

GUSTY EASTERLIES COULD RESULT IN LOCALIZED BLOWING SNOW

Forecast

Thu
5 Feb



-15°C*

Fri
6 Feb



-14°C

Sat
7 Feb



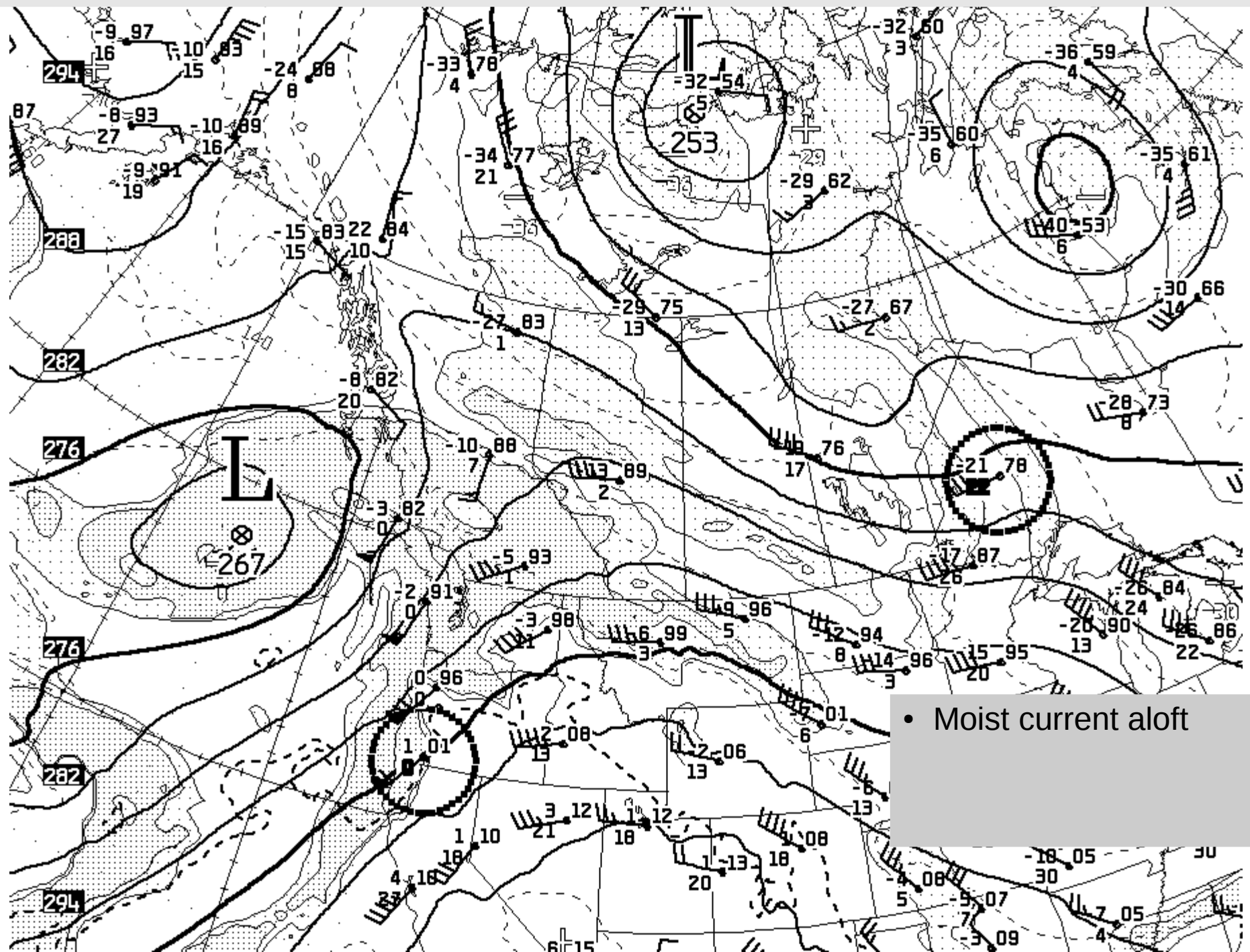
-10°C

-17°C

-15°C

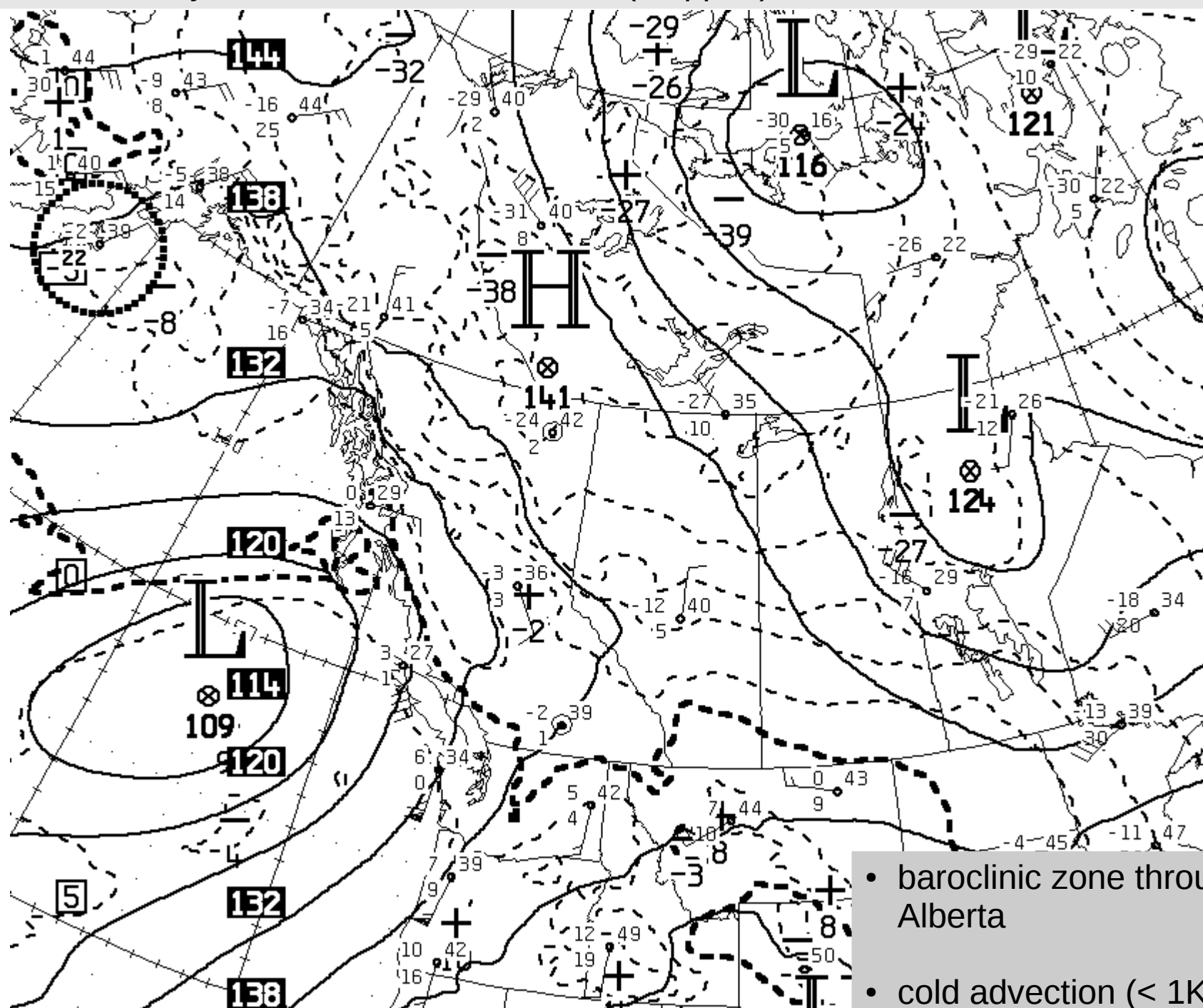
* Denotes an abnormal temperature trend

CMC 700 hPa analysis, 12Z Thurs 5 Feb. 2015 (cropped)



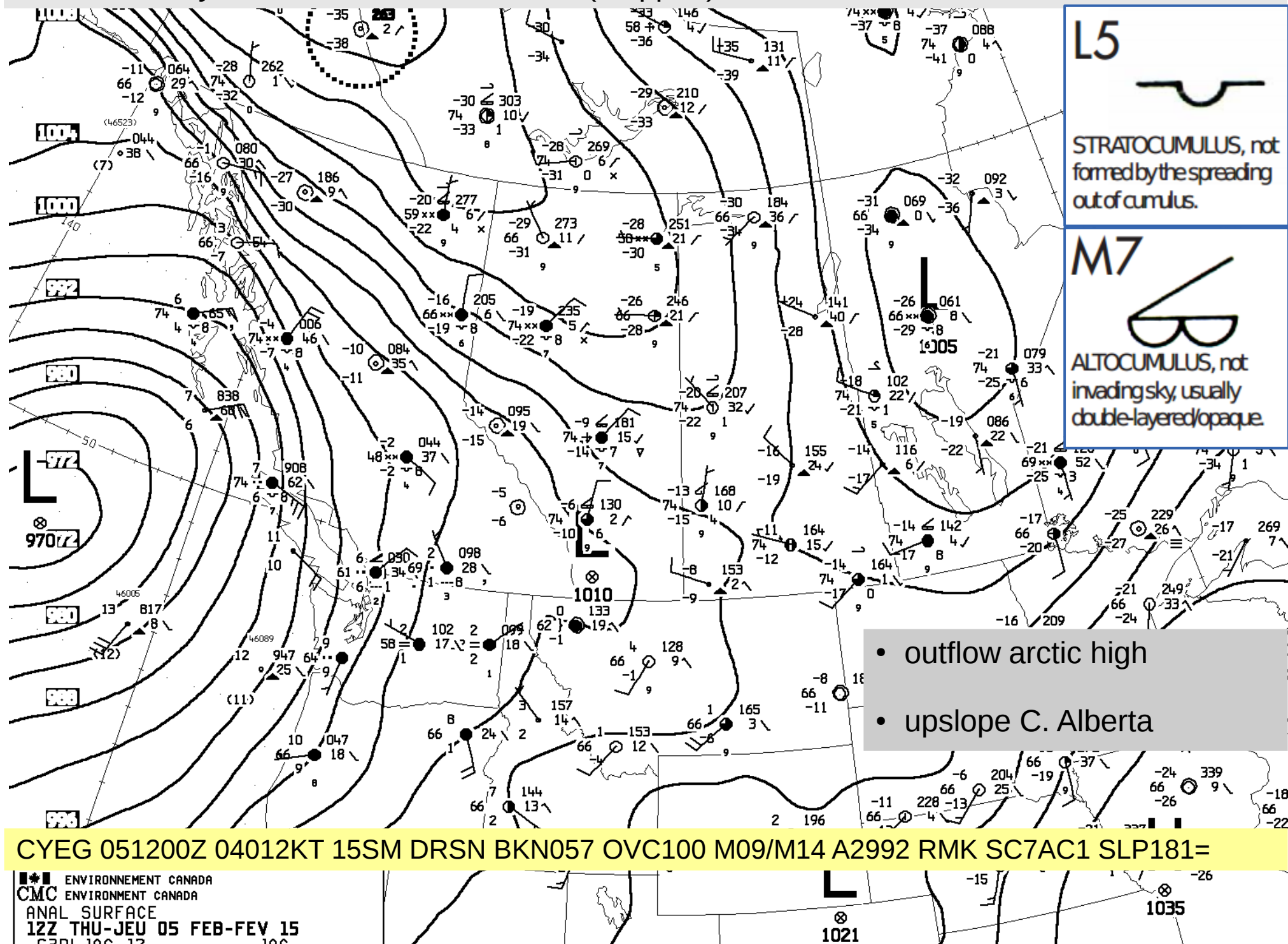
- Moist current aloft

CMC 850 hPa analysis, 12Z Thurs 5 Feb. 2015 (cropped)



- baroclinic zone through C. Alberta
- cold advection (< 1K/hr?)

CMC sfc analysis, 12Z Thurs 5 Feb. 2015 (cropped)



150205/1200 71119

WSE

SHOW:

23

LIFT:

24

SWET:

92

VTOT:

12 TO

CAPE:

0

EQLV:

-9999

SELV:

766

CINS:

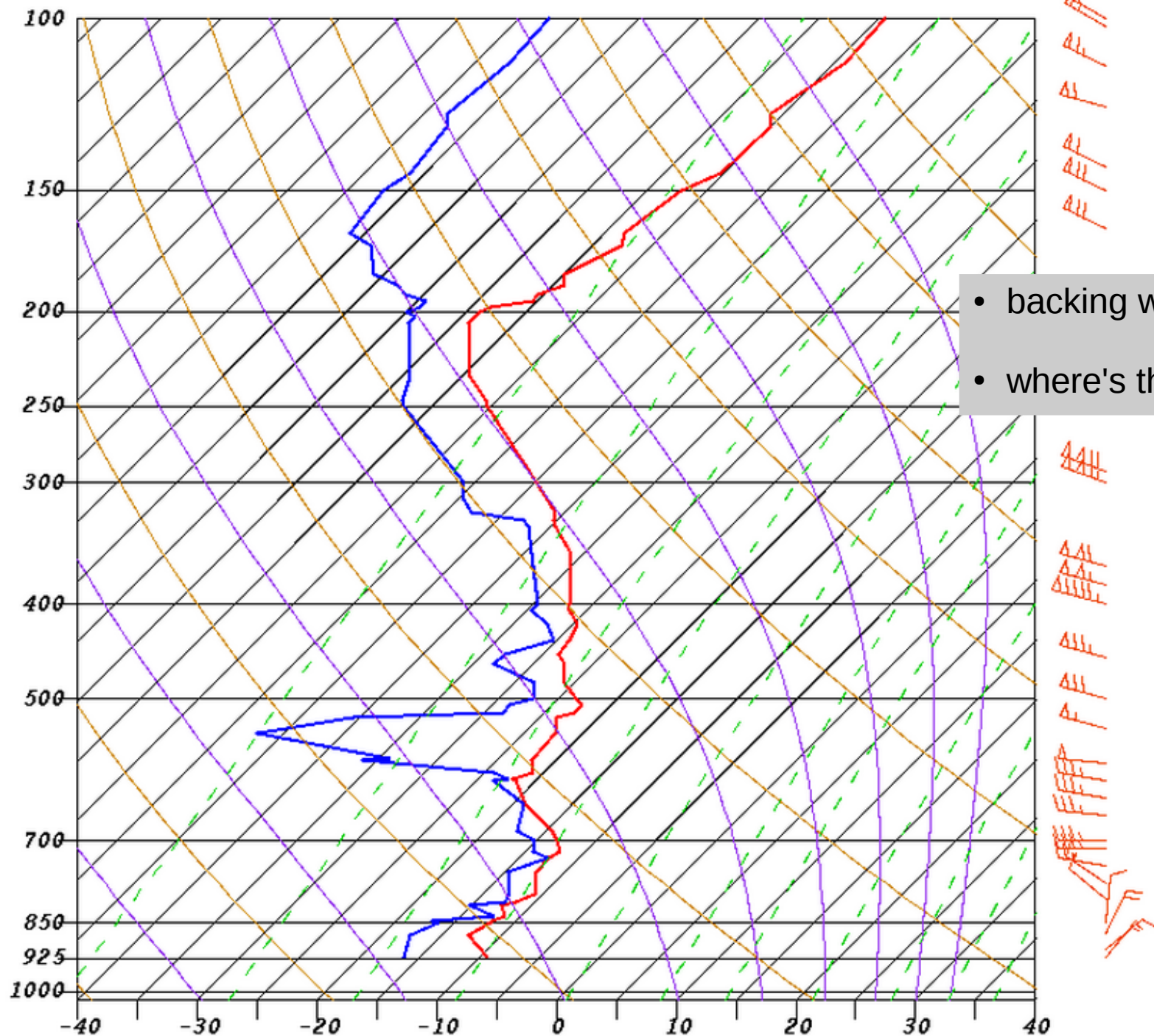
0 LF

LCLT:

256

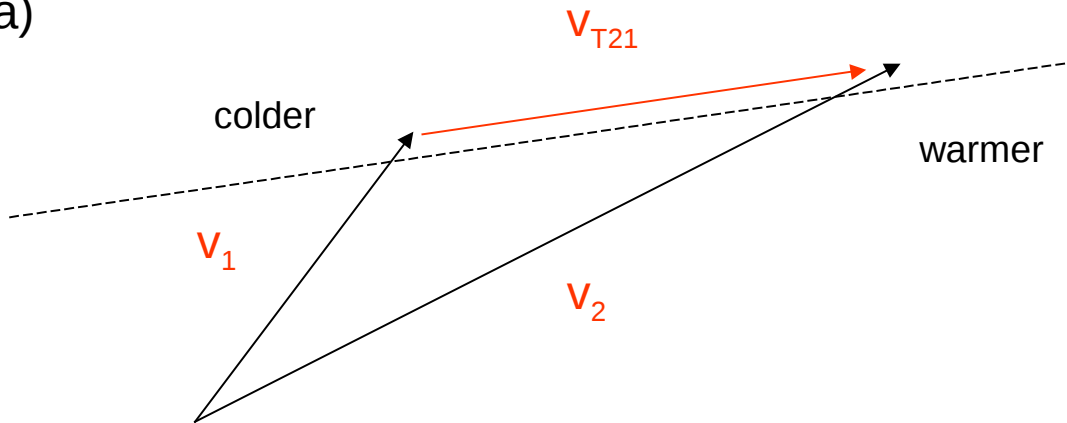
LCLP:

826



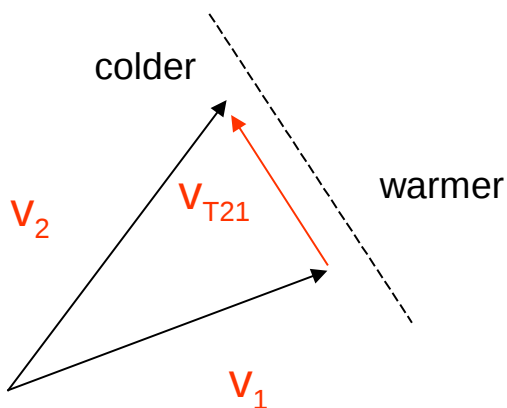
- backing wind, implies??
- where's the colder air?

a)



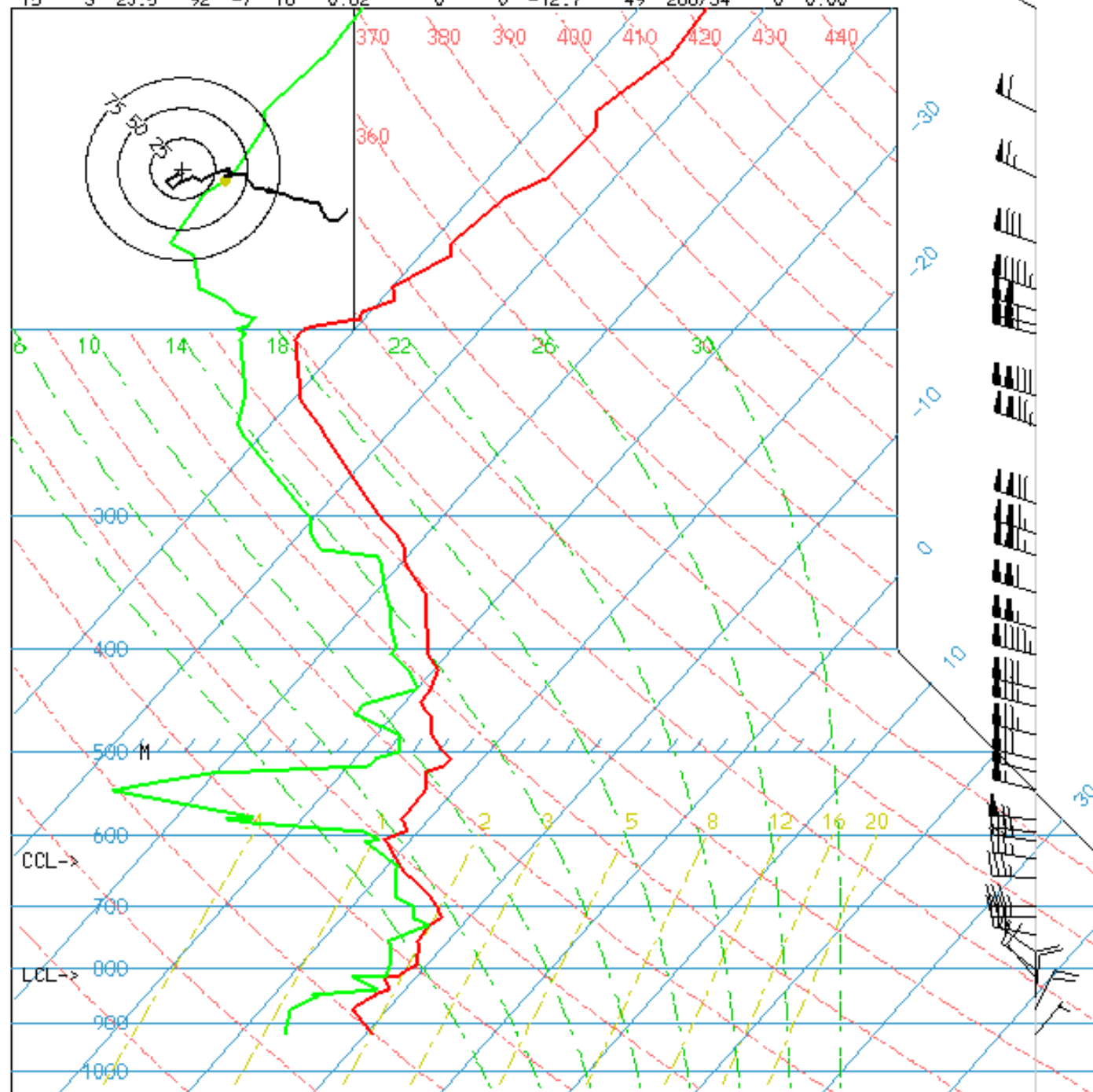
“veering wind”: wind vector turns anticyclonically with increasing height (clockwise in N. hemisphere)... associated with **warm** advection

b)



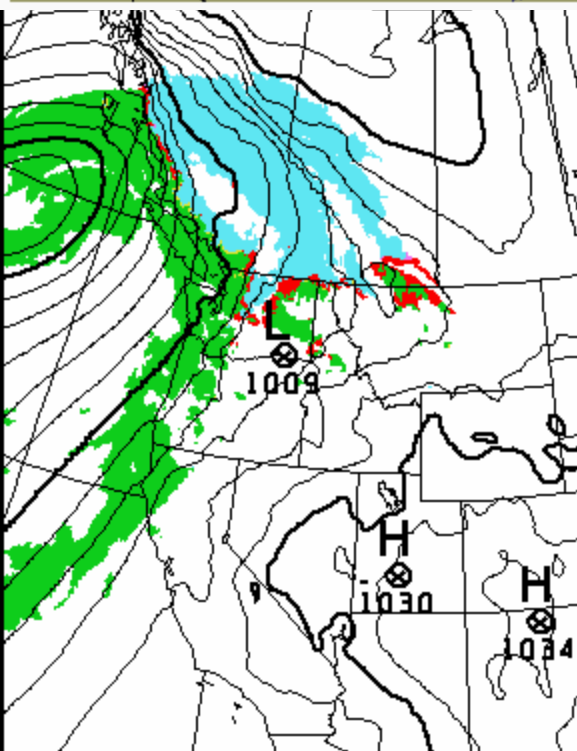
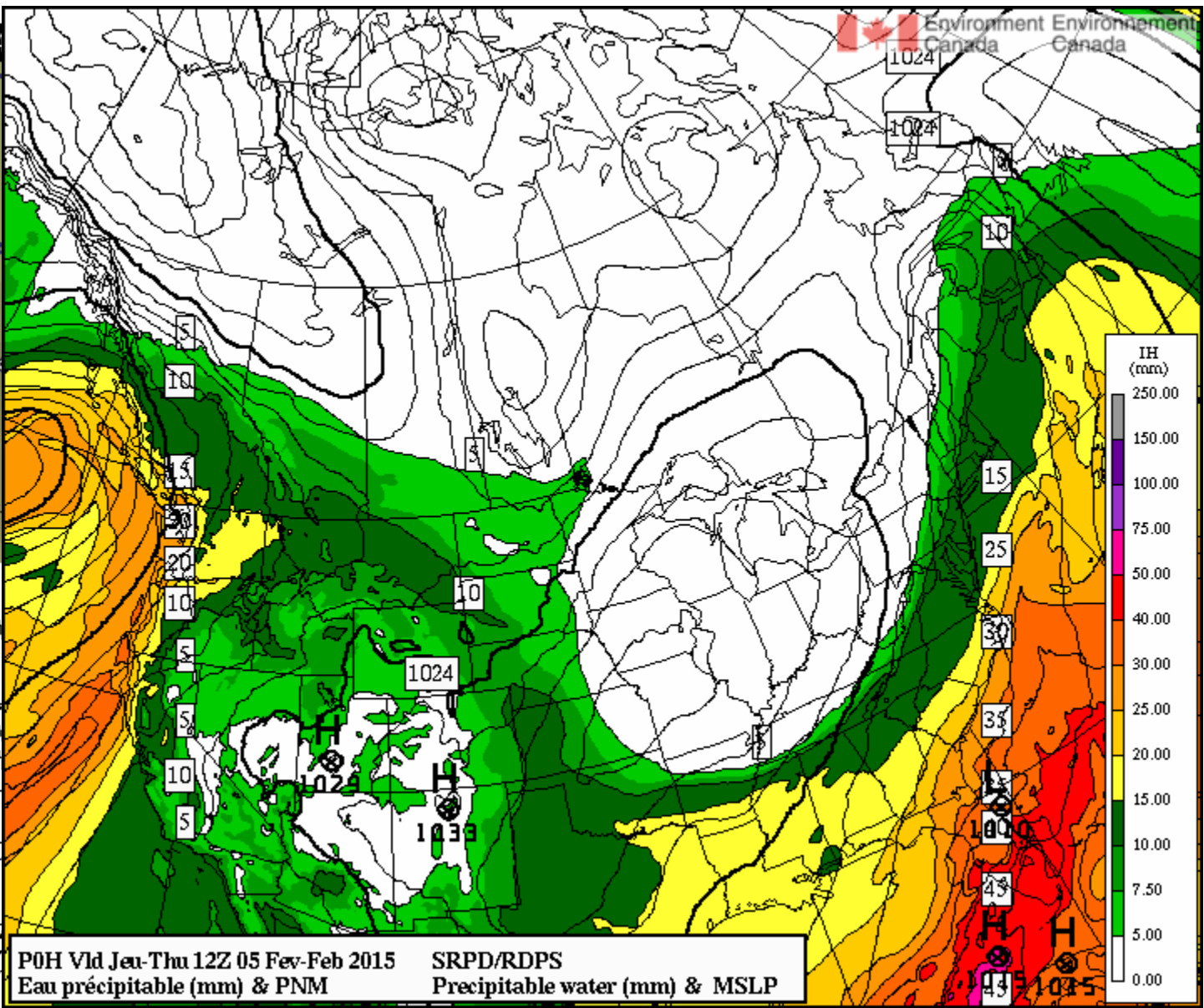
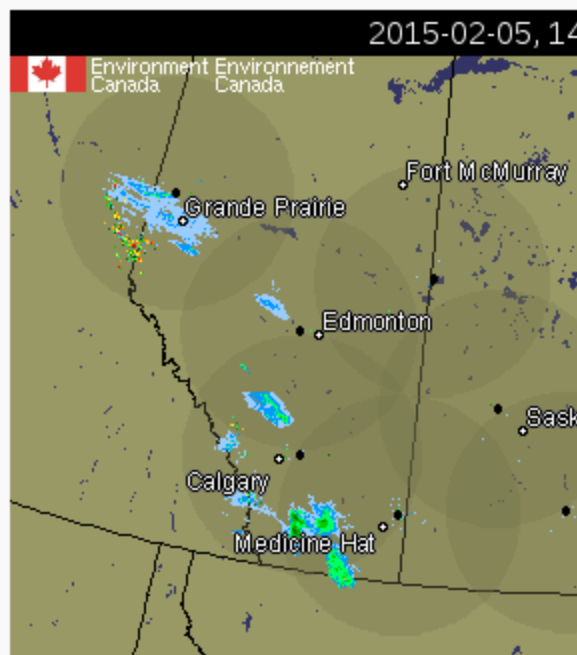
“backing wind”: wind vector turns cyclonically with increasing height (anti clockwise in N. hemisphere)... associated with **cold** advection

T(F)	Td	LI	SWT	K	TT	Pw(1cm)	CAPE	CIN	Bmin	Tc	CELL	SREH	VGP
15	3	23.5	92	-7	18	0.62	0	0	-12.7	49	286/34	0	0.00



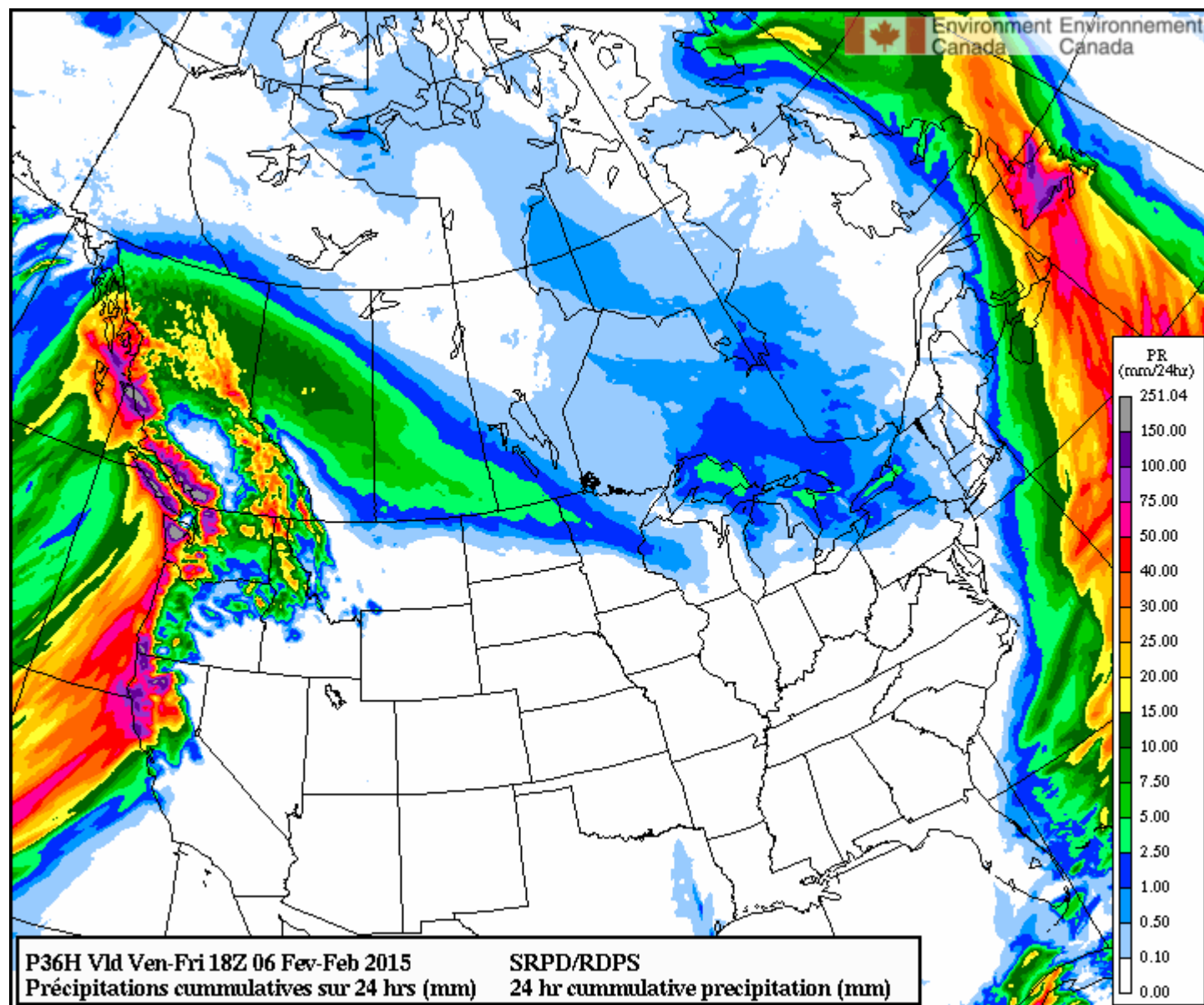
SKEN-T/LOG-P VALID 1200 UTC 02/05/2015 CWSE

Lat = 53.53 , Lon = -114.08

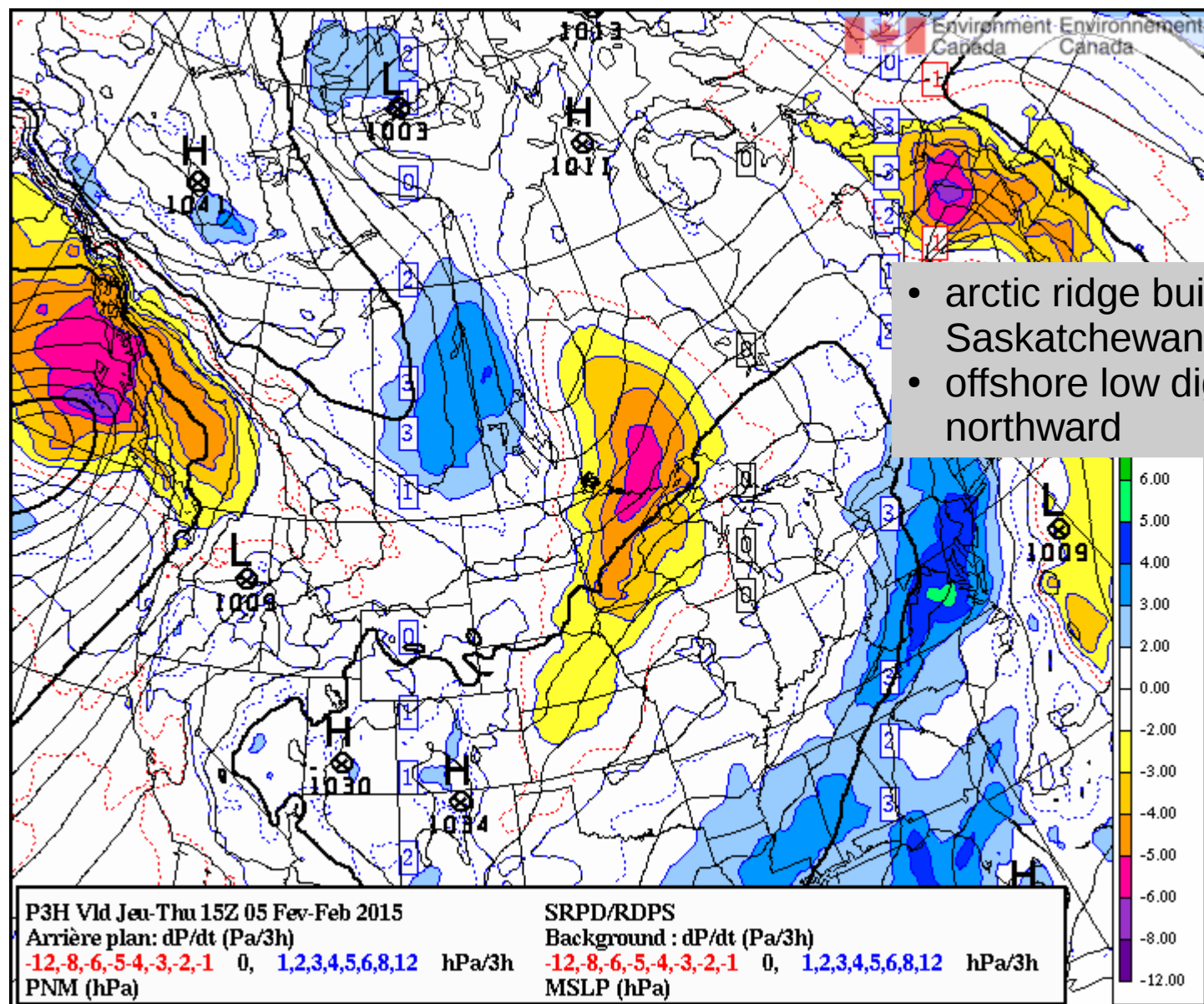


Pluie	Rain
Pluie-neige	Rain-snow
Verglas	Freezing rain
Gésil	Ice pellets
Neige	Snow

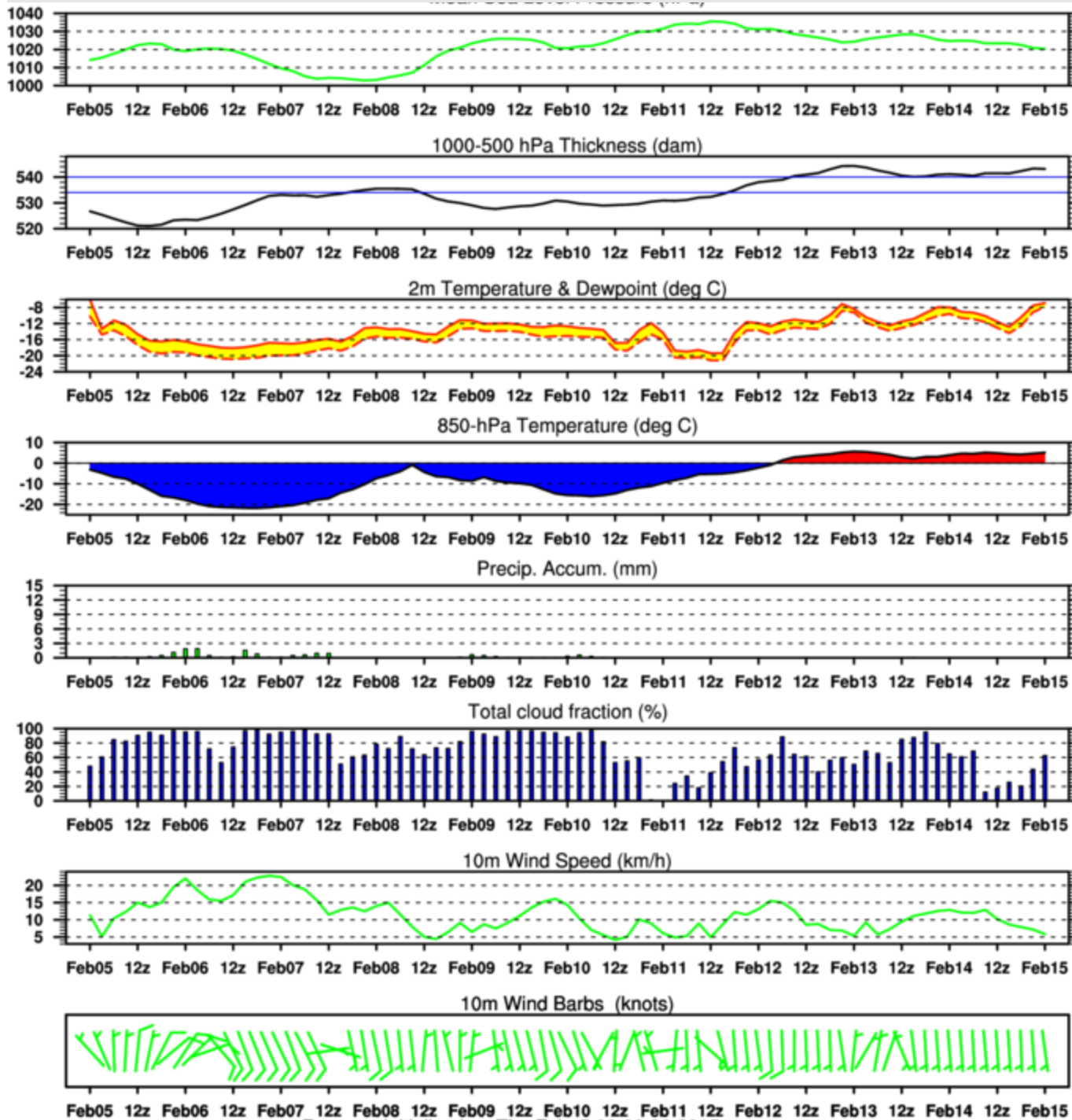
RDPS 36h prog. initialized 06Z Thurs 5 Feb. 2015... 24h cumulative precip as of 18Z Fri. 6th



RDPS 3h prog. initialized 12Z Thurs 5 Feb. 2015... pressure change from 12Z to 15Z



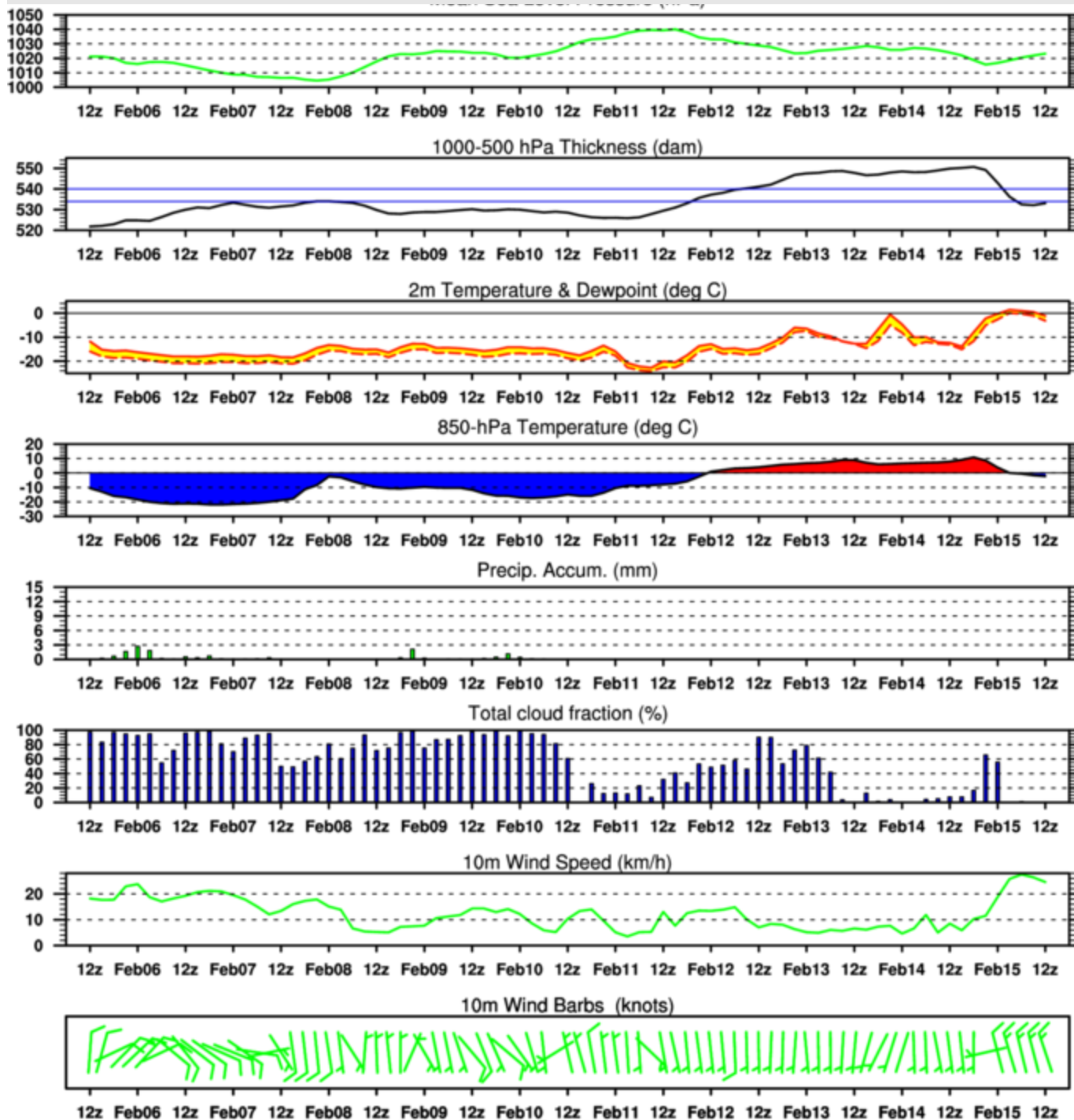
GDPS initialized 00Z Thurs 5 Feb. 2015



Forecast Initialized on Thu Feb 5 00:00:00 2015
CMC-GDPS for the City of Edmonton - <http://meteocentre.com/>

See over, the 12Z GDPS prog has Edmonton quite a bit warmer at the end of the forecast period

GDPS initialized 12Z Thurs 5 Feb. 2015



Forecast Initialized on Thu Feb 5 12:00:00 2015

CMC-GDPS for the City of Edmonton - <http://meteocentre.com/>

Added after class (CRAS45NA fcst, assimilates GOES sounder water vapor and clouds)

