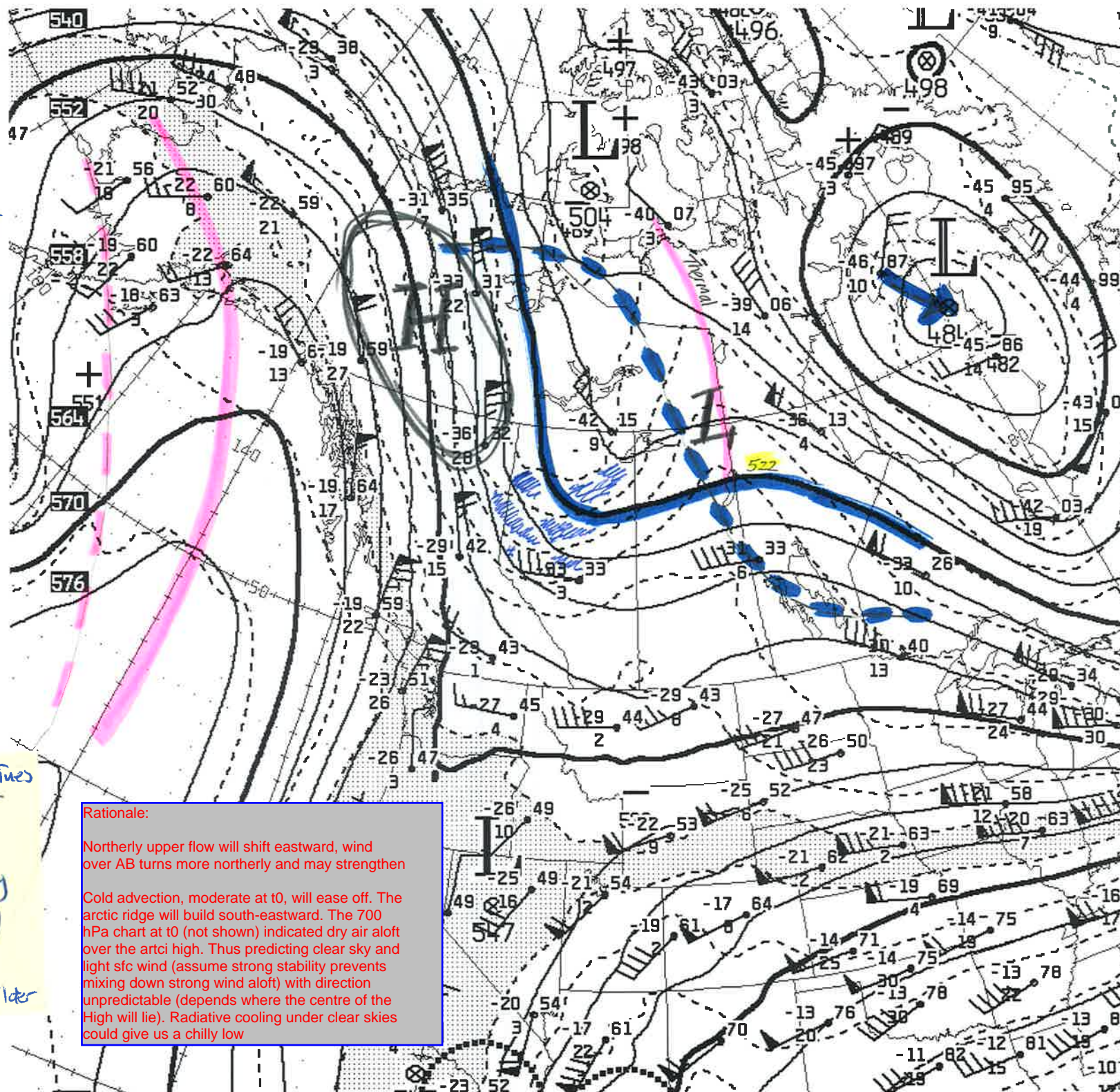


CMC 500 hPa
analysis
12Z
Mon 2 Mar./15
= t_0

Upwind ridge
moved east
~5°

For VEC 12Z times
Light ^{sfc} wind
Cooler thickness by
2 ctrs (12 dam)
Clear sky
Low -20 or milder



Arctic vortex
has not moved
much

Dashed lines
 $t_0 - 24h$

Rationale:

Northerly upper flow will shift eastward, wind over AB turns more northerly and may strengthen

Cold advection, moderate at t_0 , will ease off. The arctic ridge will build south-eastward. The 700 hPa chart at t_0 (not shown) indicated dry air aloft over the arctic high. Thus predicting clear sky and light sfc wind (assume strong stability prevents mixing down strong wind aloft) with direction unpredictable (depends where the centre of the High will lie). Radiative cooling under clear skies could give us a chilly low

Prepared 15 MST
Mon. 2 March/15
by JDW