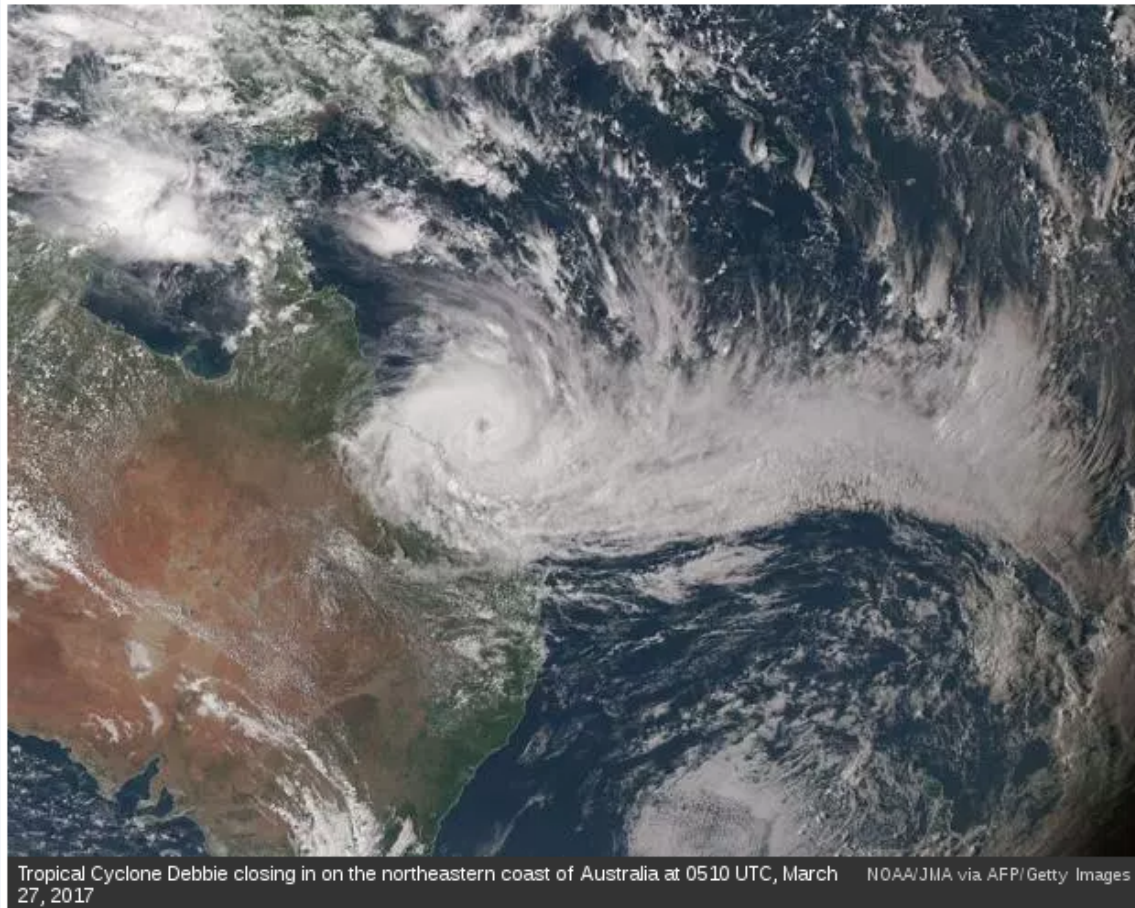


Cyclone Debbie rips into Australia with 260 kmph gusts as insurers declare a catastrophe



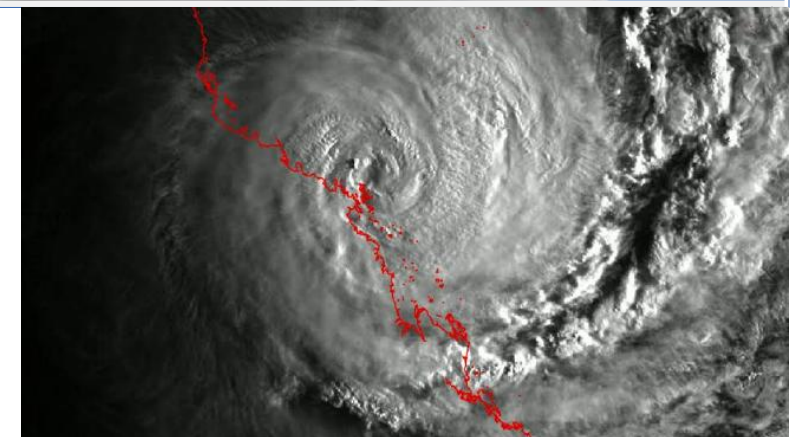
MATTHEW BURGESS AND MICHAEL SIN, WASHINGTON POST | March 28, 2017 8:56 AM ET
[More from Washington Post](#)



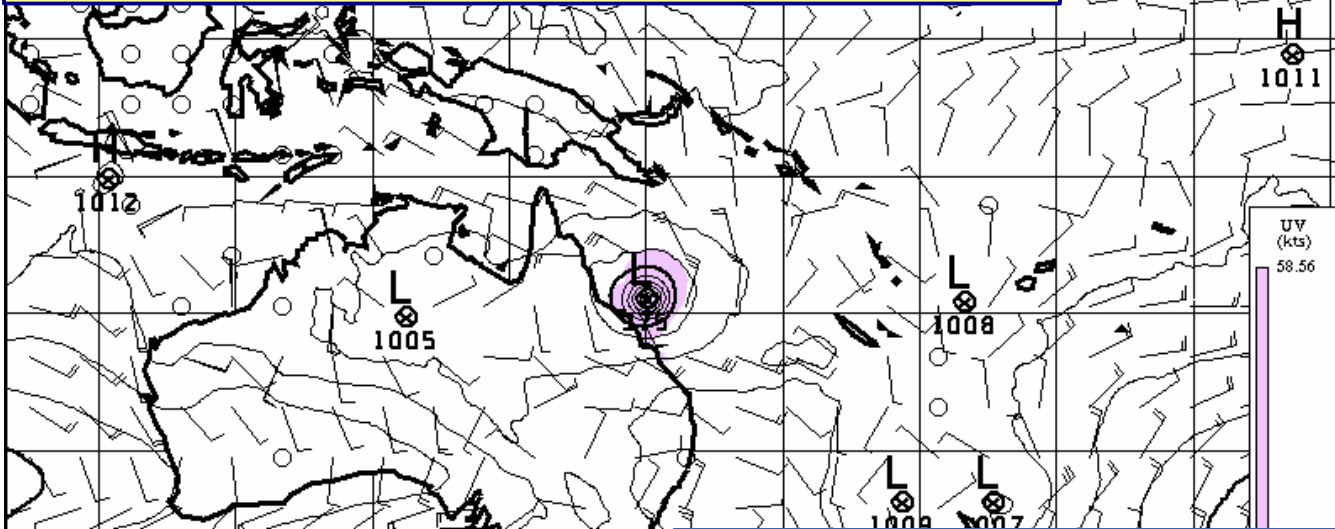
Tropical Cyclone Debbie closing in on the northeastern coast of Australia at 0510 UTC, March 27, 2017. NOAA/JMA via AFP/Getty Images

[Like](#) [Share](#) 45 [Twitter](#) [Google+](#) [Reddit](#) [Email](#) [Typo?](#) [More](#)

A powerful cyclone tore into Australia's northeastern coast on Tuesday, forcing thousands of people to flee, shuttering coal to gold mines and prompting insurers to declare a catastrophe.

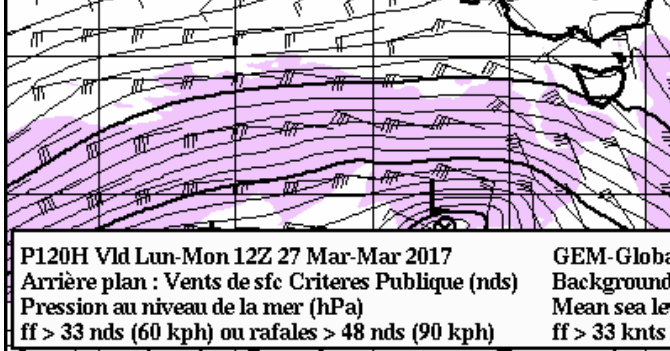
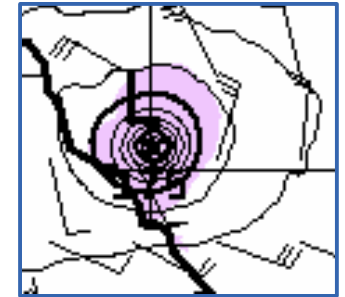


Advance prediction of an intense tropical storm:



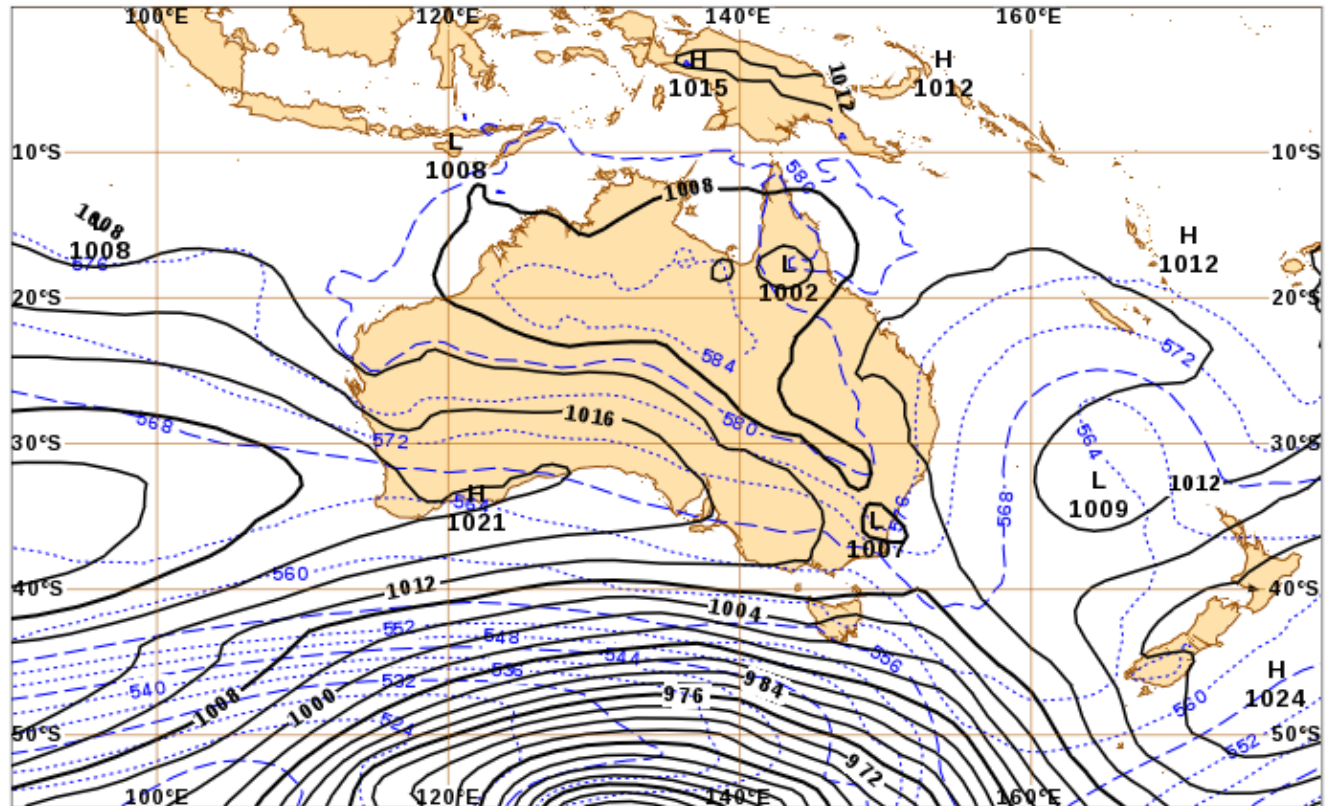
Central pressure:

975 hPa



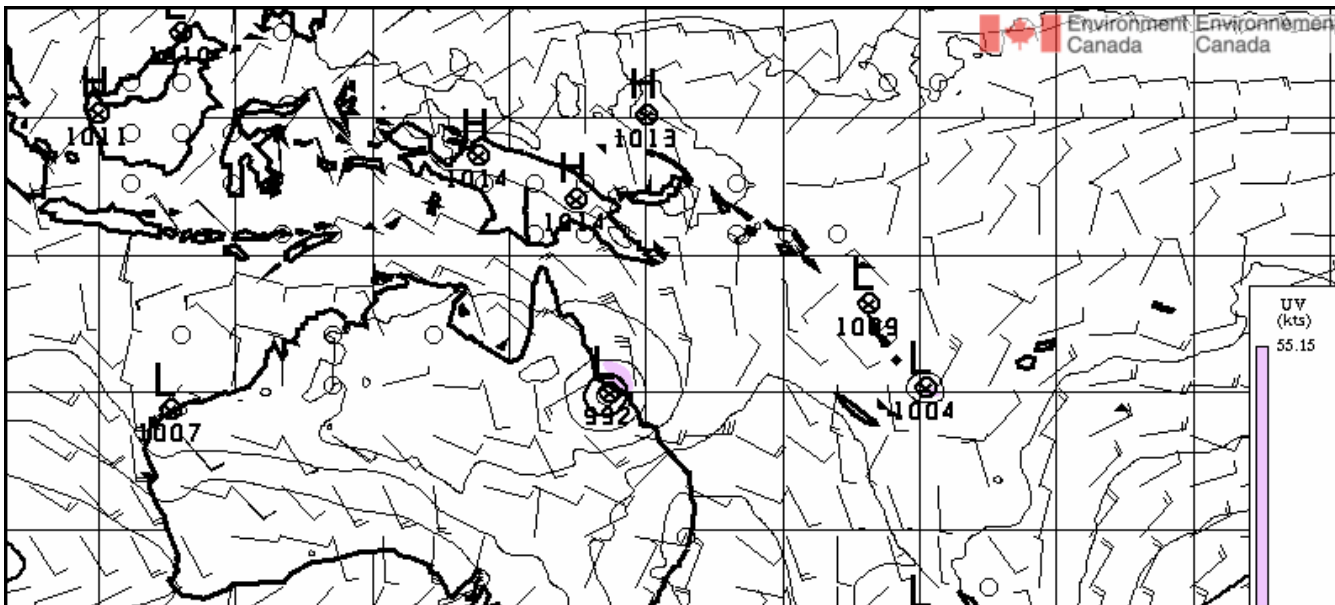
MSLP / 1000-500 hPa Thickness
 Valid 12UTC Mon 27 Mar 2017

ACCESS-Global
 t+120



© Copyright Commonwealth of Australia 2017, Australian Bureau of Meteorology

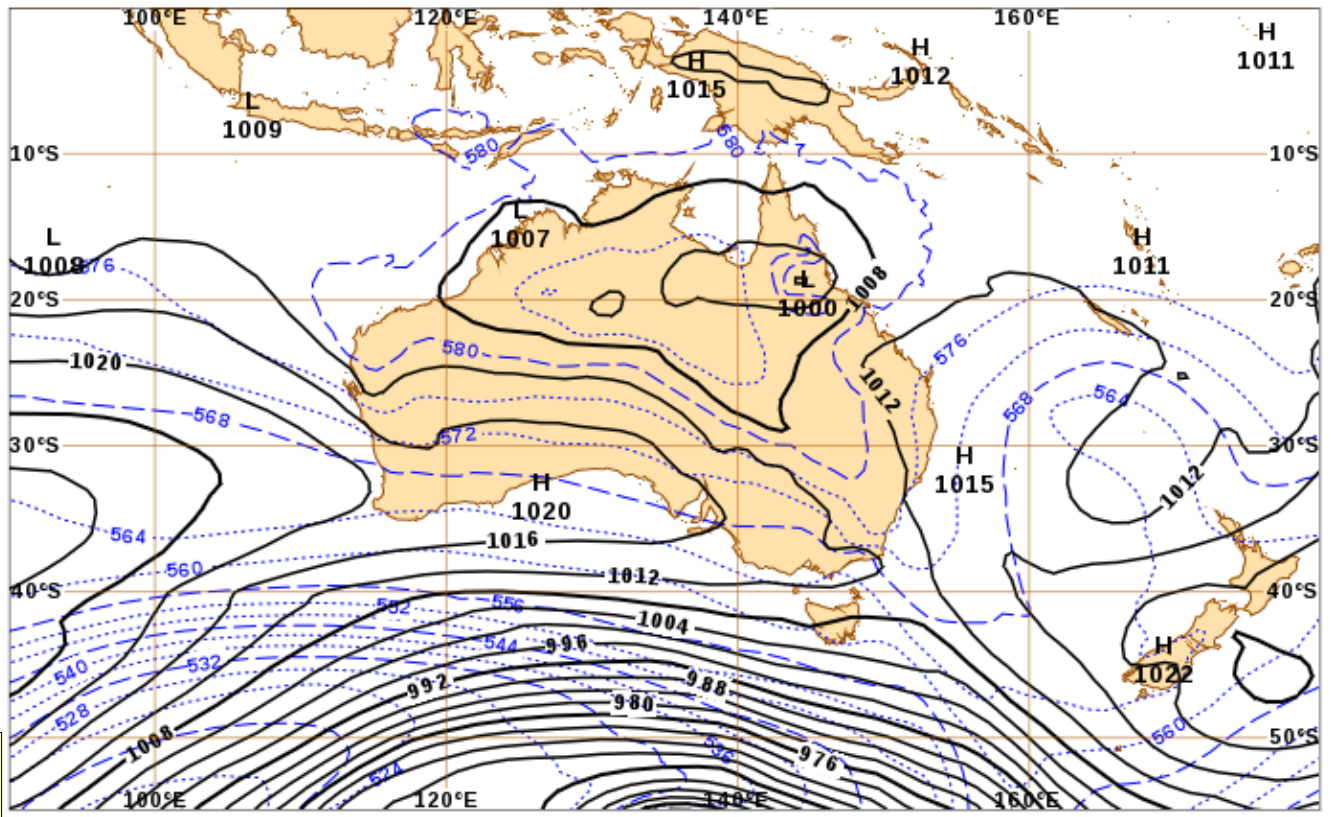
120h (5 day) progs initialized
 12Z Wed 22 March



P108H Vld Lun-Mon 12Z 27 Mar-Mar 2017
 Arrière plan : Vents de sfc Critères Public (nds)
 Pression au niveau de la mer (hPa)
 ff > 33 nds (60 kph) ou rafales > 48 nds (90 kph)

GEM-Globe Background
 Mean sea level
 ff > 33 knts

MSLP / 1000-500 hPa Thickness ACCESS-Global t+108
 Valid 12UTC Mon 27 Mar 2017



108h (4.5 day) progs
 initialized 00Z Thurs 23 March



Australian Government
Bureau of Meteorology

Tropical Cyclone Outlook for The Coral Sea

IDQ10810

Australian Government Bureau of Meteorology
Queensland

Tropical Cyclone Outlook for Coral Sea

Issued at 2:30 pm EST on Thursday 23 March 2017
for the period until midnight EST Sunday 26 March 2017.

Existing Cyclones in the Eastern Region:

Nil.

Potential Cyclones:

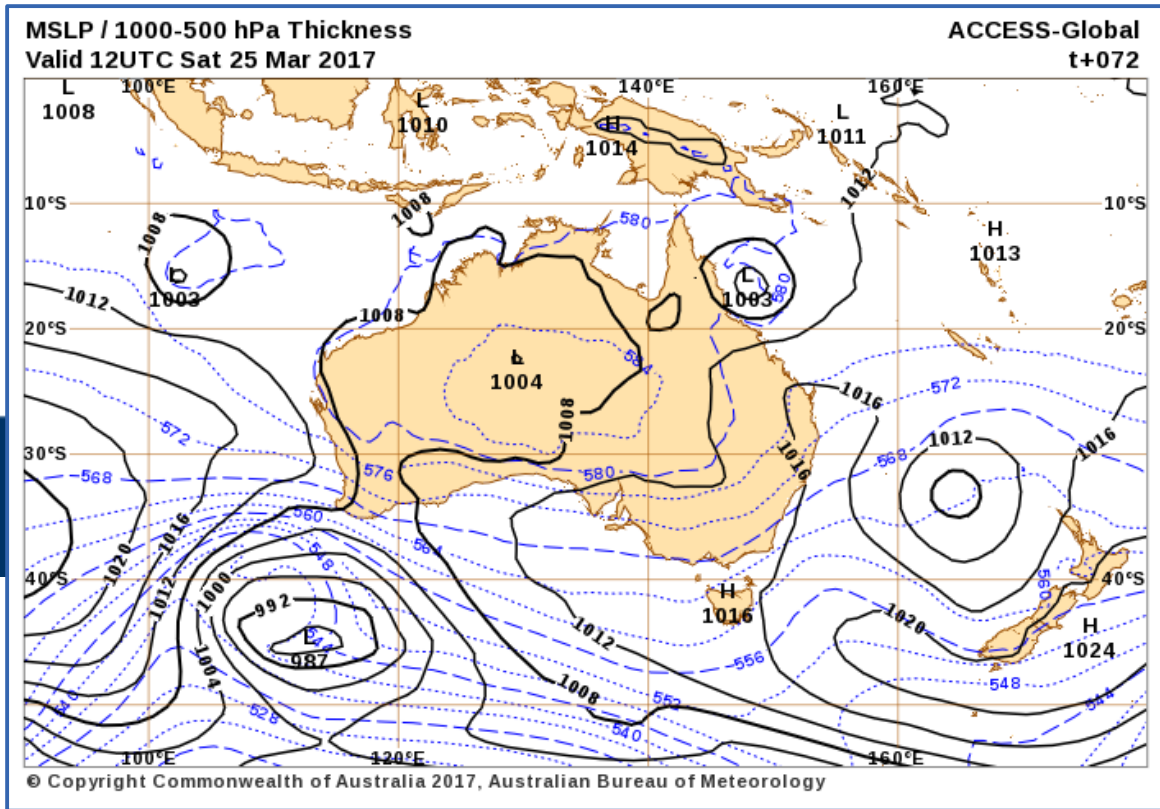
A tropical low pressure system is located southeast of the Papua New Guinea mainland. It is forecast to drift southward for the next 24 to 36 hours, before turning more westward towards the tropical Queensland coast late Friday or on Saturday.

Conditions are favourable for this system to develop, and the probability of it forming into a tropical cyclone will steadily increase into the weekend.

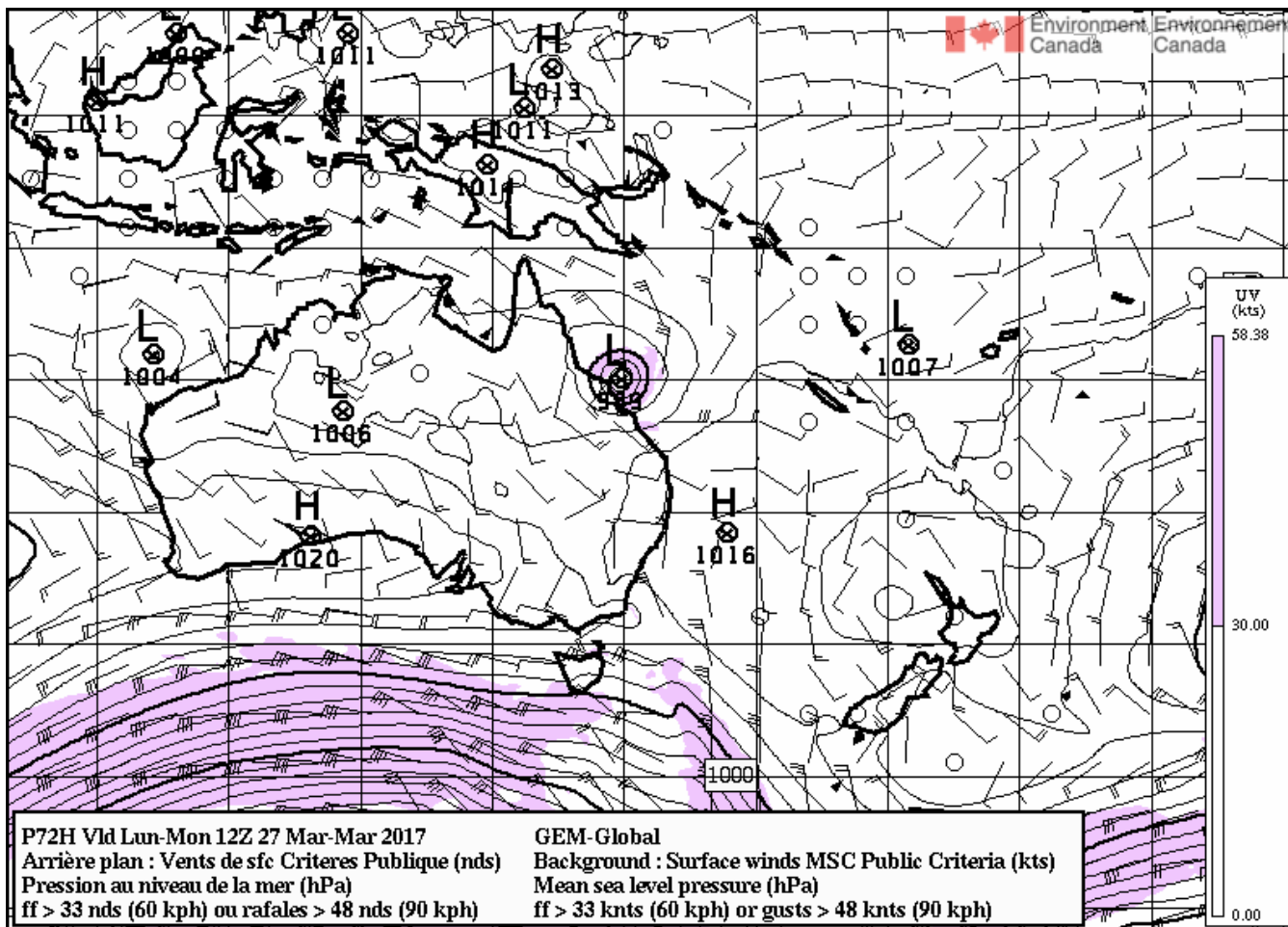
This system is likely to make landfall on the north tropical Queensland coast early next week.

Likelihood of a tropical cyclone in the Eastern Region on:

| | |
|-----------|----------|
| Friday: | Low |
| Saturday: | Moderate |
| Sunday: | High |



Australian 72h (3 day) prog initialized 12Z Wed 22 March placed the cyclone at the coast as of 12Z Saturday – but as a much weaker storm than the Canadian model had indicated

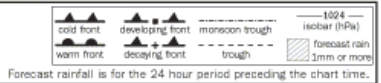


72h (3 day) prog initialized
00Z Thurs 23 March

Canadian prog differs in its
timing, and predicted a lower
central pressure than the
Aussi prog

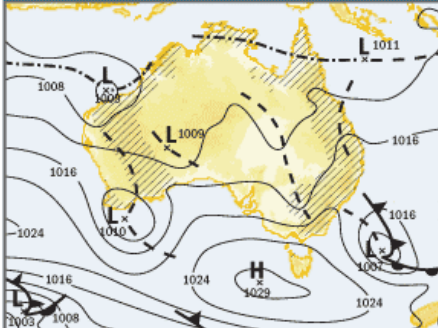
Mean Sea Level Pressure Prognosis
 Issued: March 22, 2017 - Updated daily between 2pm and 3pm EST
 All times Eastern Standard Time (EST)

© Commonwealth of Australia 2017, Bureau of Meteorology

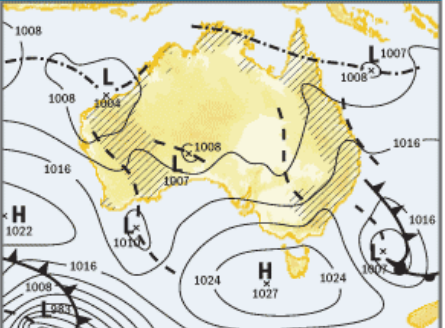


Forecast rainfall is for the 24 hour period preceding the chart time.

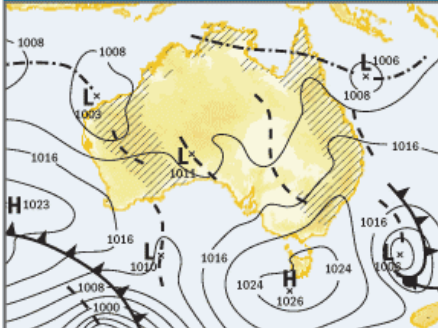
10am Thursday March 23, 2017



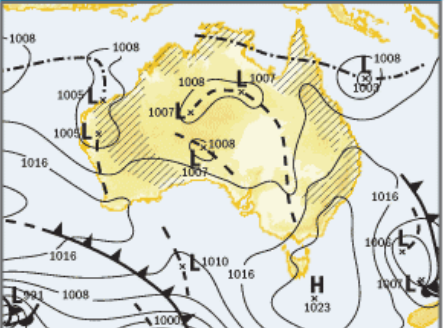
10pm Thursday March 23, 2017



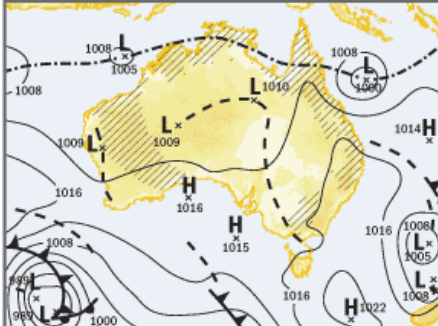
10am Friday March 24, 2017



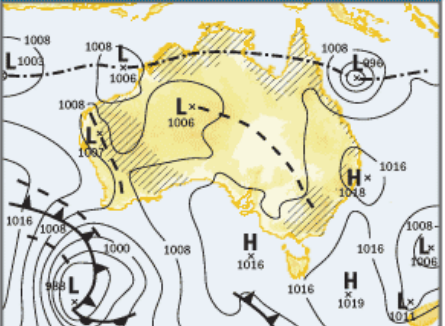
10pm Friday March 24, 2017



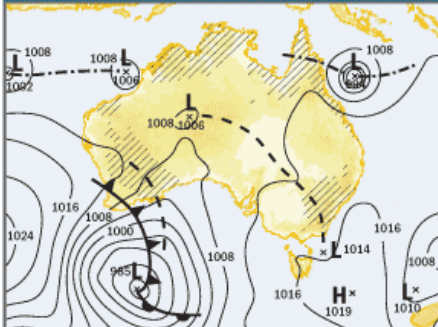
10am Saturday March 25, 2017



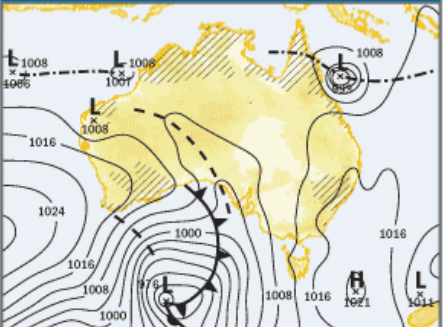
10pm Saturday March 25, 2017



10am Sunday March 26, 2017



10pm Sunday March 26, 2017



Australian prog did develop the storm, but timing and central pressure differed from Canadian prog – both models indicated 4 or more closed isobars defining the storm at time of landfall, implying very strong winds



TROPICAL CYCLONE ADVISE NUMBER 33

Issued at 2:01 am EST on Tuesday 28 March 2017

Headline:

Severe tropical cyclone Debbie, category 4, is approaching the Whitsunday Islands.

Areas Affected:

Warning Zone

Lucinda to St Lawrence, including Townsville, Mackay, and the Whitsunday Islands, extending inland to Charters Towers, Mo

Watch Zone

None.

Cancelled Zone

None.

Details of Severe Tropical Cyclone Debbie at 2:00 am AEST:

Intensity: Category 4, sustained winds near the centre of 175 kilometres per hour with wind gusts to 250 kilometres per hour

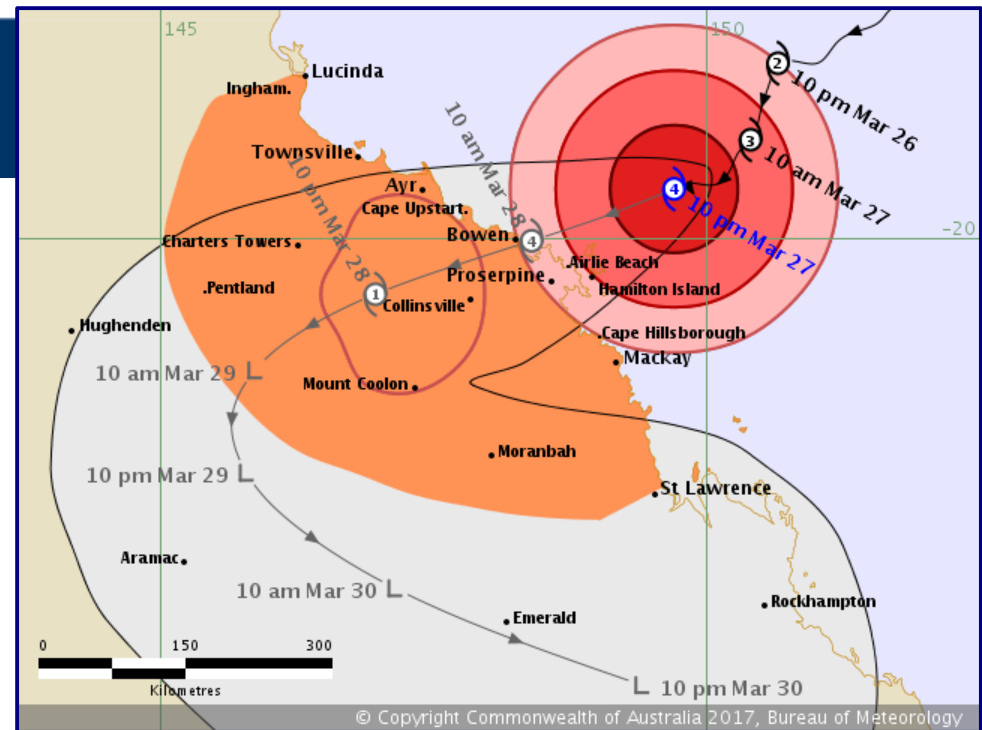
Location: within 30 kilometres of 19.8 degrees South 149.4 degrees East, estimated to be 125 kilometres east northeast of

Movement: west southwest at 9 kilometres per hour.

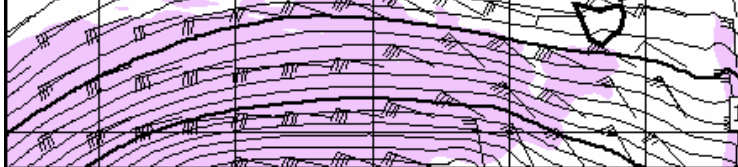
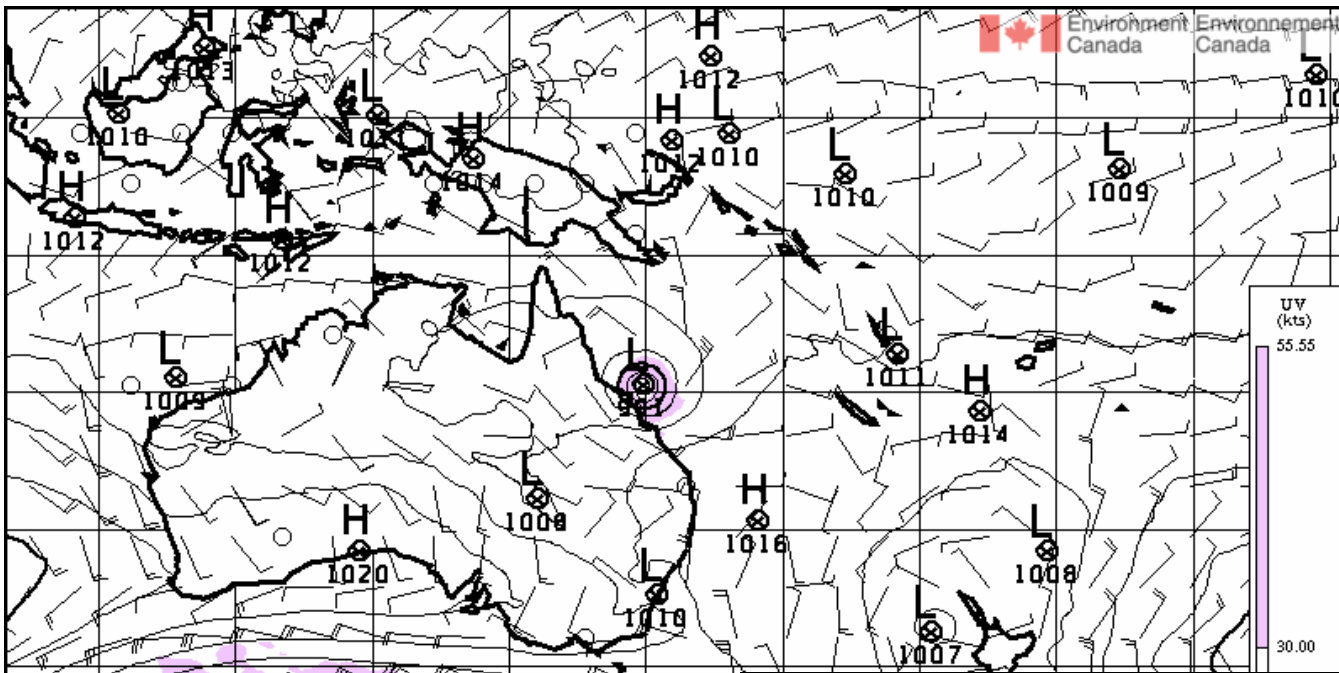
Severe tropical cyclone Debbie is currently a category 4 cyclone. It may intensify further as it continues to move west-southwest. Severe tropical cyclone Debbie is forecast to make landfall between Ayr and Cape Hillsborough (north of Mackay) late this morning.

Hazards:

The VERY DESTRUCTIVE CORE of tropical cyclone Debbie is forecast to cross the coast between Ayr and Cape Hillsborough. Wind gusts potentially to 260 km/h near the centre of the system.



Actual conditions at 12Z
Monday 27 March:



P0H Vld Lun-Mon 12Z 27 Mar-Mar 2017
 Arrière plan : Vents de sfc Critères Public (nds)
 Pression au niveau de la mer (hPa)
 ff > 33 nds (60 kph) ou rafales > 48 nds (90 kph)

GEM-Global
 Background : Surfa
 Mean sea level pres
 ff > 33 knts (60 kph)

