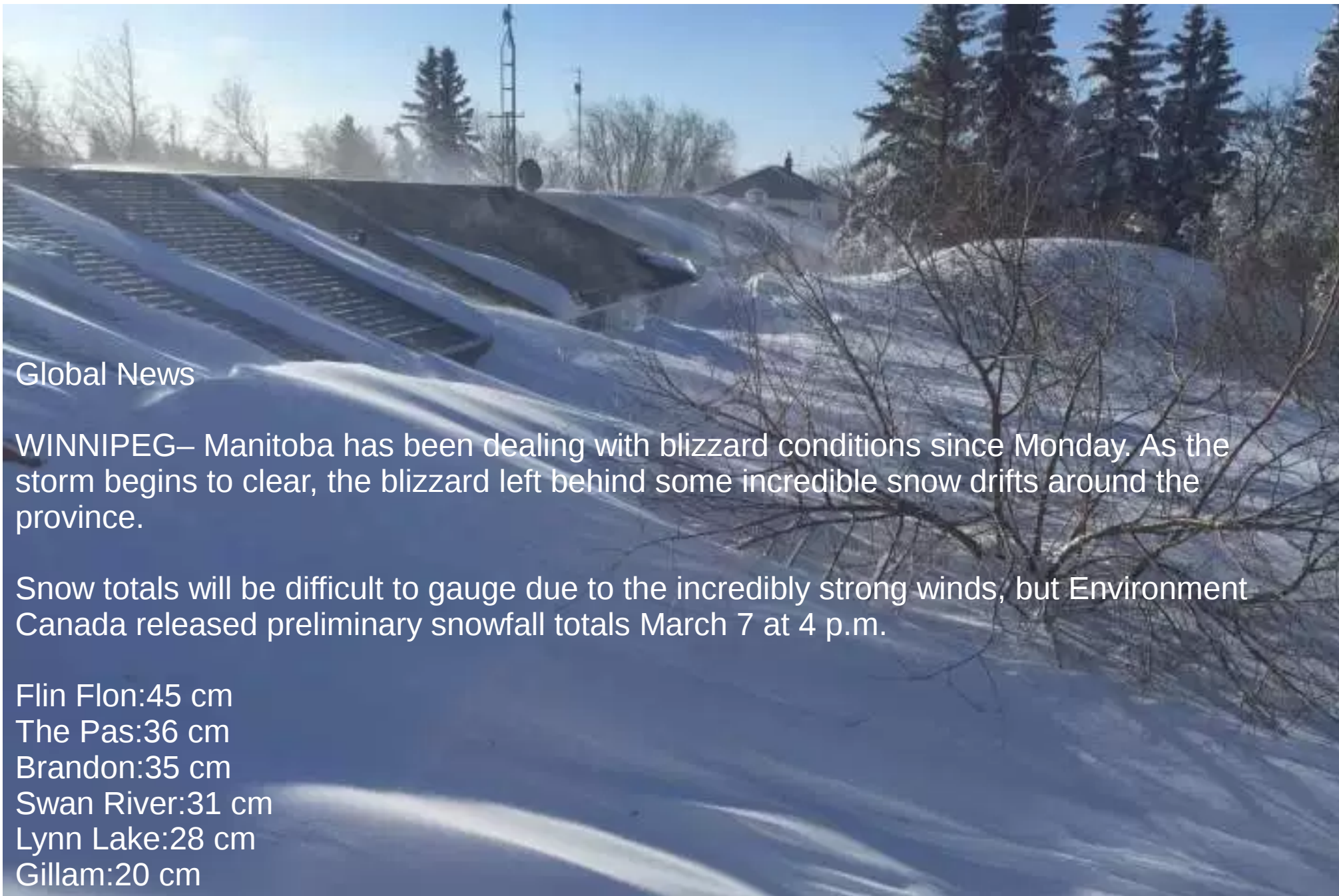


## A quick look at the weather maps associated with a blizzard 7/8/9 March 2017



### Global News

WINNIPEG— Manitoba has been dealing with blizzard conditions since Monday. As the storm begins to clear, the blizzard left behind some incredible snow drifts around the province.

Snow totals will be difficult to gauge due to the incredibly strong winds, but Environment Canada released preliminary snowfall totals March 7 at 4 p.m.

Flin Flon:45 cm

The Pas:36 cm

Brandon:35 cm

Swan River:31 cm

Lynn Lake:28 cm

Gillam:20 cm

ENVIRONMENT CANADA AT 7:00 AM CST WEDNESDAY  
MARCH 8 2017.

SYNOPTIC OVERVIEW... MASSIVE 965 MB LOW NEAR ONTARIO-MANITOBA BORDER ALONG HUDSON BAY DOMINATING SYNOPTIC PATTERN FOR THE EASTERN HALF OF CANADA. THIS SYSTEM BOTTOMED OUT AT 960 MB AT 06Z, BUT IS NOW BEGINNING TO FILL. 1045 MB RIDGE OF HIGH PRESSURE FROM ALASKA THROUGH NWT INTO ALBERTA PROVIDING PLENTY OF PRESSURE GRADIENT FOR STRONG NORTHERLY WINDS.

DISCUSSION... NORTHERN MANITOBA...THE NORTH IS IN THE GRIP OF ONE OF THE MOST POWERFUL WINTER STORMS IN RECENT MEMORY, WITH AN ASTONISHING ZERO VISIBILITY IN SNOW AND BLOWING SNOW BEING REPORTED FOR THE LAST 12 HOURS AT GILLAM... ALONG THE UNSHELTERED COASTLINE OF HUDSON BAY CHURCHILL WILL CONTINUE TO TAKE A MERCILESS BEATING TODAY AND MOST OF THURSDAY WITH ZERO VISIBILITY IN SNOW AND BLOWING SNOW, WINDS GUSTING TO 100 KM/H, AND WIND CHILL VALUES FALLING INTO THE MINUS 50'S.

WESTERN ARCTIC...THE EXTREMELY COLD ARCTIC AIR WITH TEMPERATURES IN THE MINUS 40'S CONTINUES TO HANG AROUND. A NUMBER OF LOCATIONS HAVE WIND CHILLS IN THE MINUS 60'S THIS MORNING, WITH A REPEAT EXPECTED FOR TONIGHT. RELIEF FROM THESE EXTREME COLD CONDITIONS WILL LIKELY OCCUR BY FRIDAY.

The powerful storm that has battered Manitoba continues to hammer Churchill, with officials urging residents to stay indoors as all but its most essential services are shuttered.

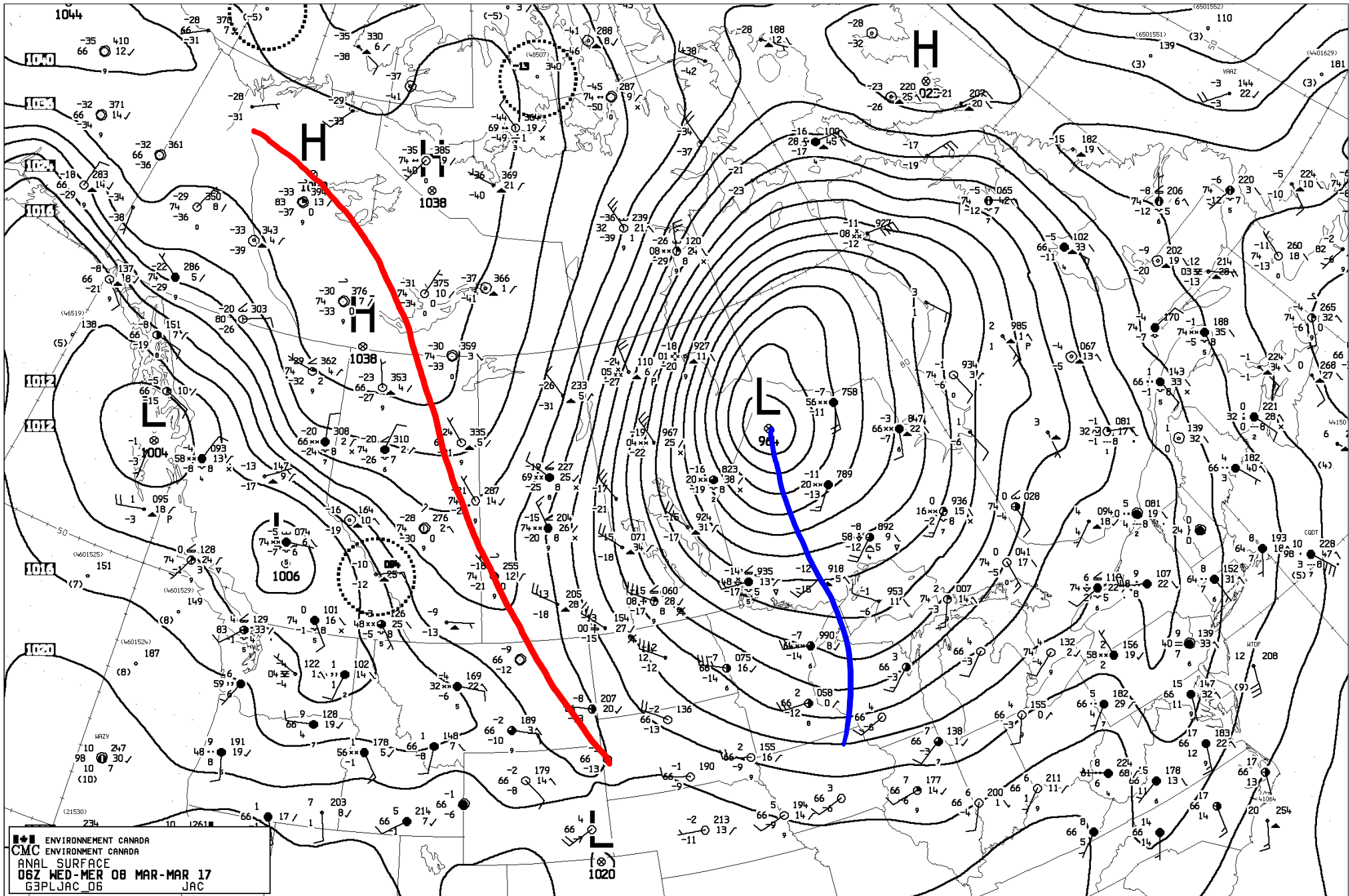
Snow coupled with wind gusts in excess of 90 km/h (topped with a recorded gust of 104 km/h at 11 p.m. Tuesday, according to Environment Canada) has forced the closure of the airport, left a Via Rail train stranded in town and delayed the community's weekly supply train until the weather clears...

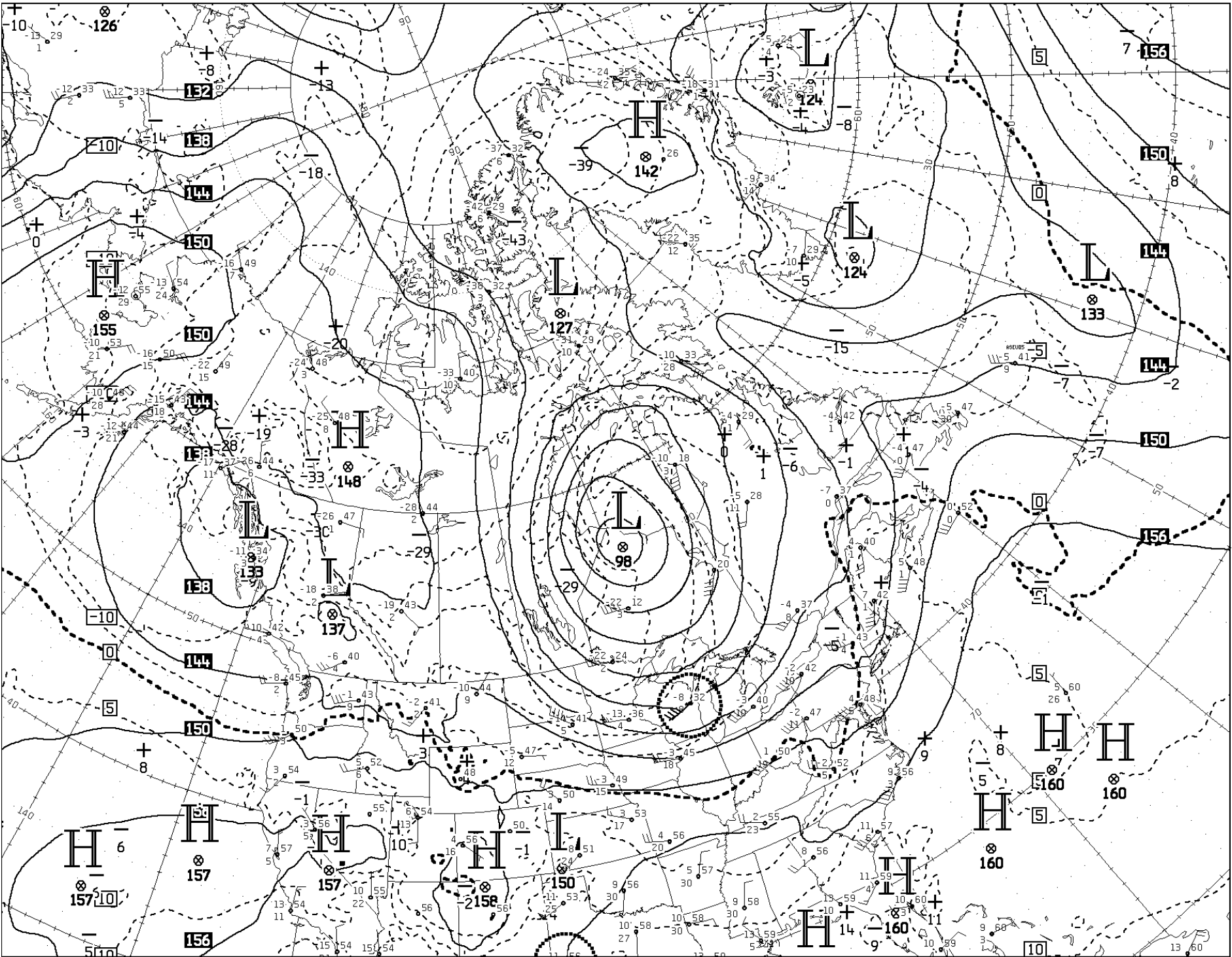
"As soon as the winds die down and it's safe to, we'll start opening up the roads. Right now, essential services can't respond to anything. Luckily, we haven't had that emergency call. (But if it does) we've got a plan in play."

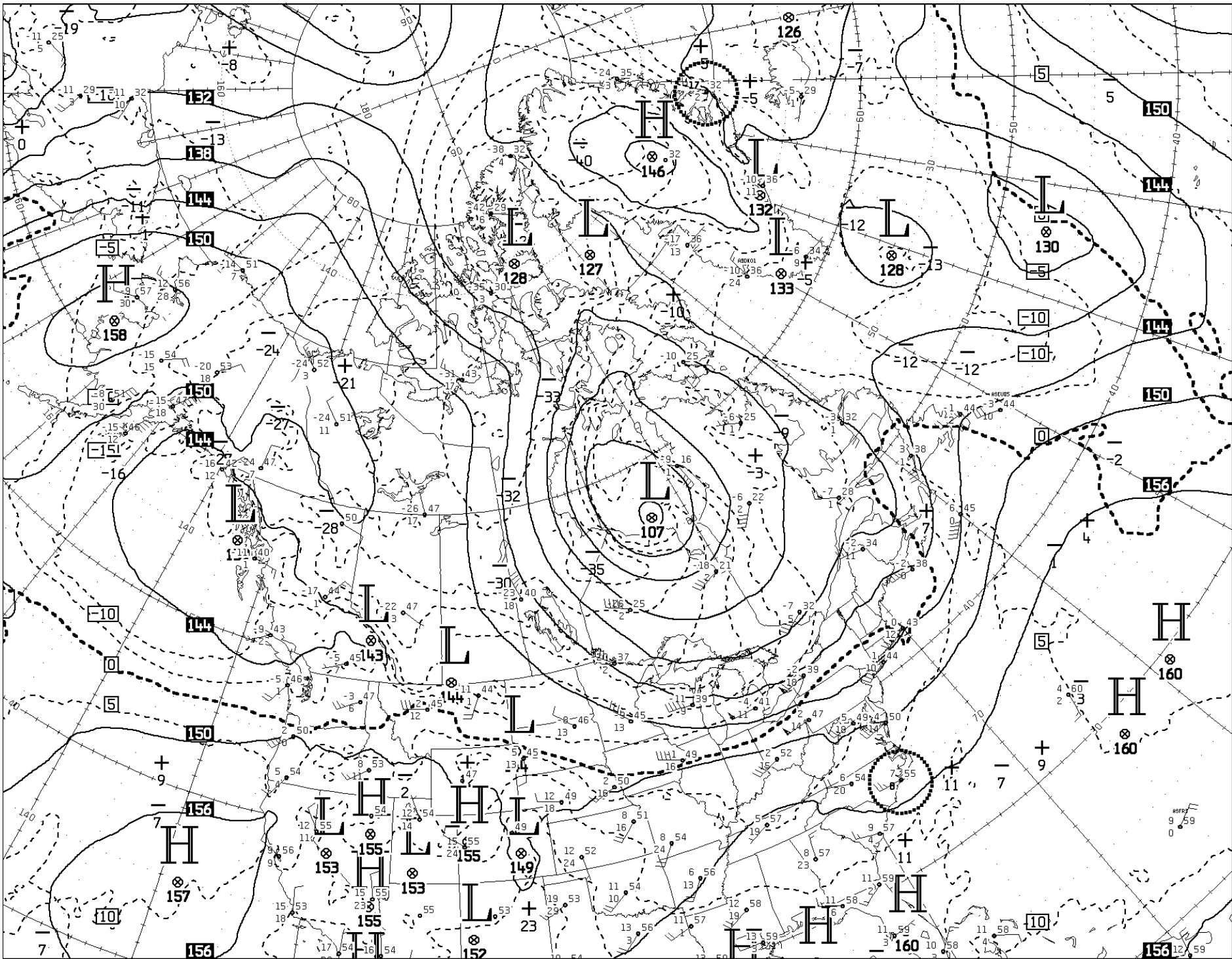
Environment Canada issued its first special weather statement for the northern part of province 4:30 a.m. Sunday calling for major winter storm. By 5 a.m. Monday, it became a blizzard warning.

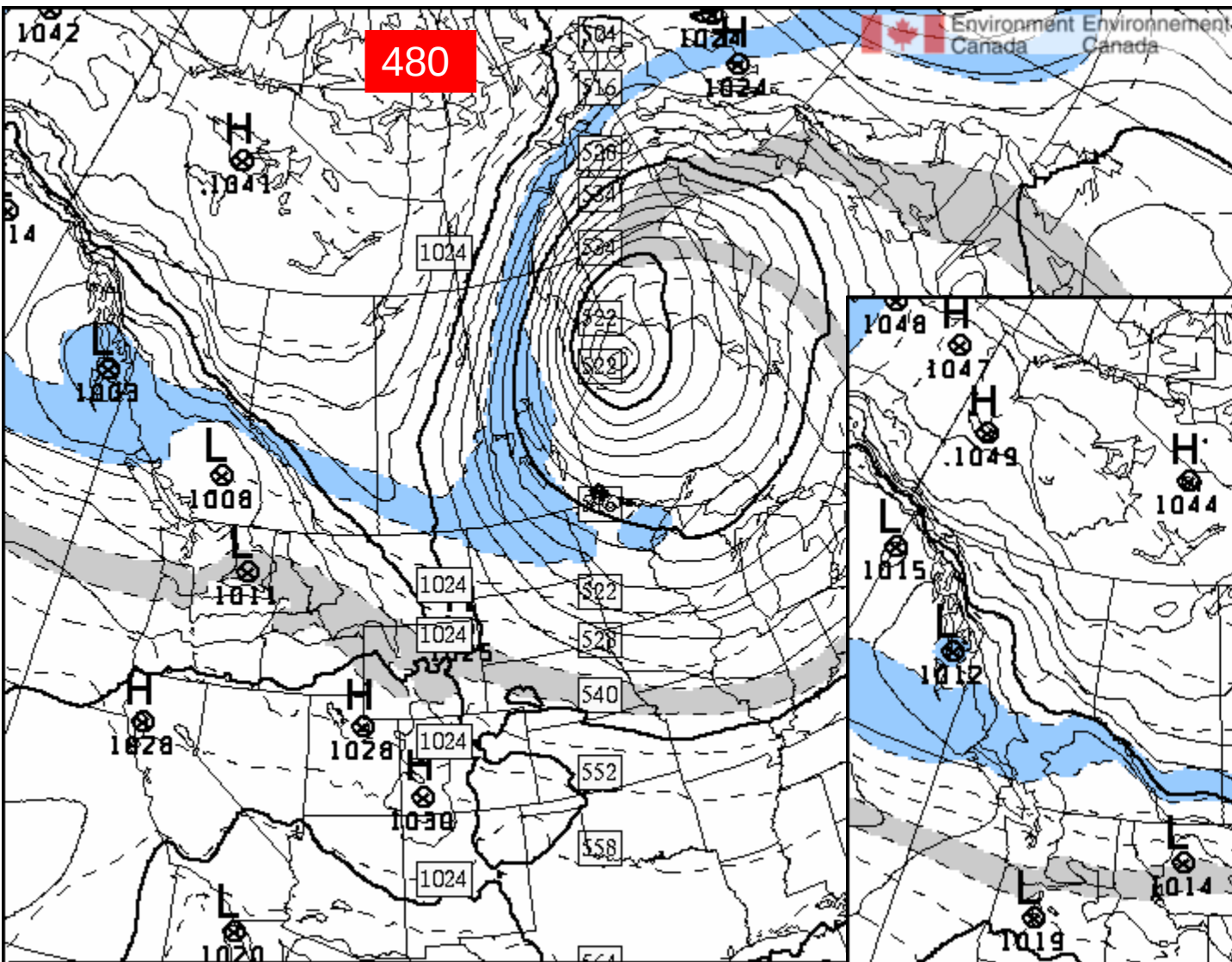
As of 3 p.m. Wednesday, the town had been experiencing zero visibility for 27 consecutive hours.

... Winnipeg Free Press

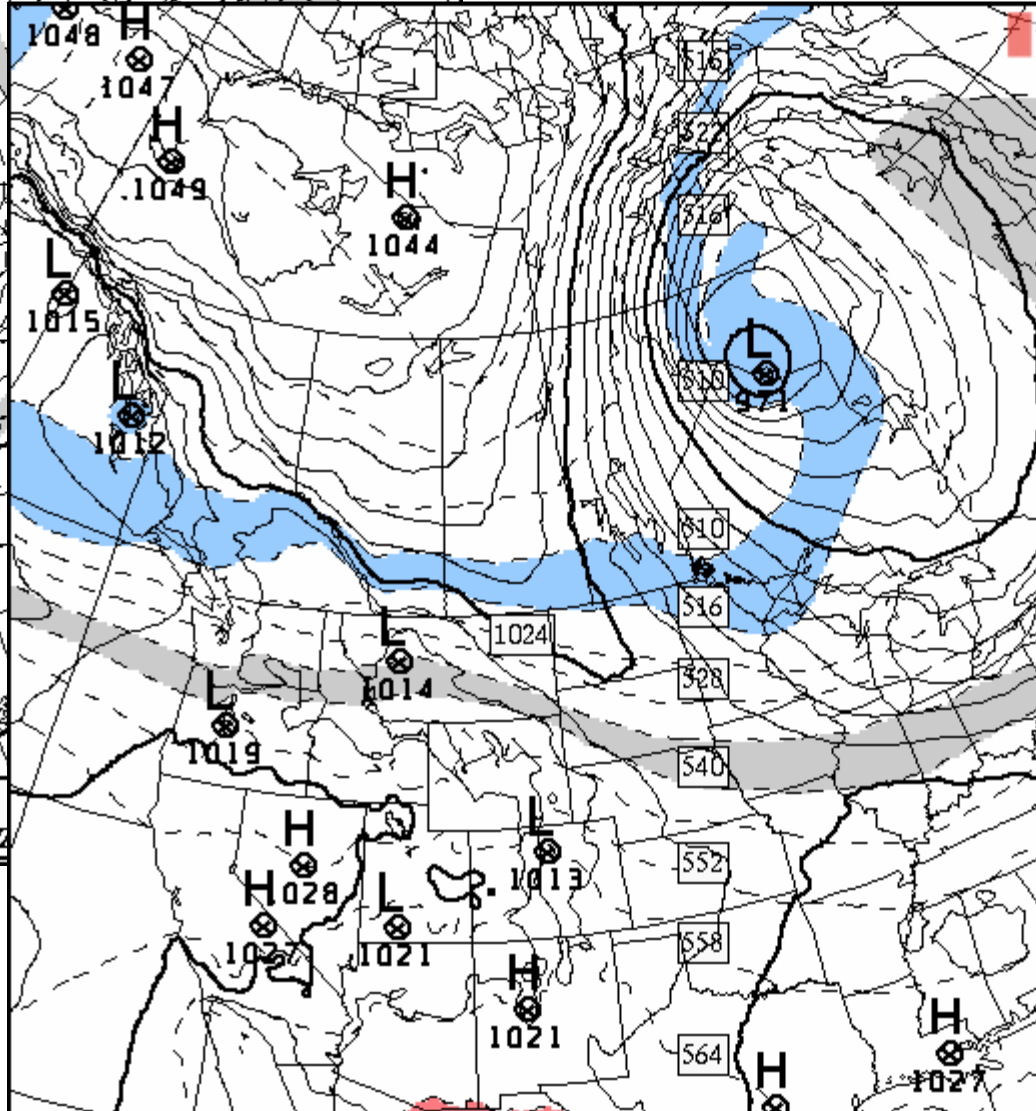




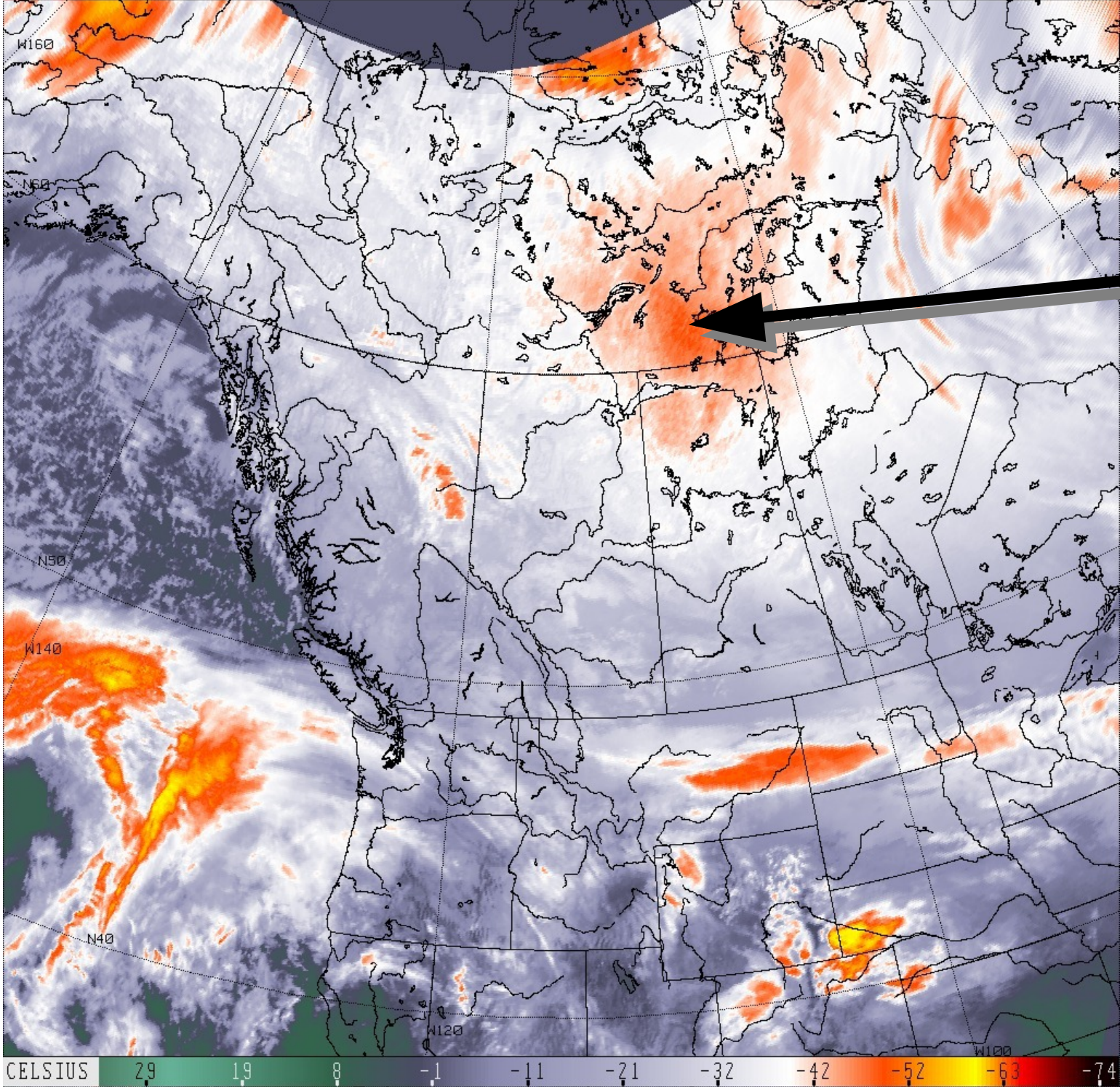




P0H Vld Mer-Wed 06Z 08 Mar-Mar 2017 SRPD/RDPS  
CONTINU PNM (hPa) & 1000-500 DZ SOLID MSLP (hPa) & 1000-500 DZ



P0H Vld Mer-Wed 18Z 08 Mar-Mar 2017 SRPD/RDPS  
CONTINU PNM (hPa) & 1000-500 DZ SOLID MSLP (hPa) & 1000-500 DZ



Cloud tops? Or, exceptionally cold surface?

Does not move in animation, therefore, the latter... and note cold core in this region on the 12Z analysis for 850 hPa (next page)

